

ANKOM *TDF* DIETARY FIBER ANALYZER

AUTOMATE OFFICIAL METHODS

The TDF Dietary Fiber Analyzer automates AOAC methods 985.29, 991.43 and 2001.03, 2009.01, 2011.25, 2017.16, and 2022.01. The instrument allows the user to perform stand-alone IDF, SDF, and TDF analyses, as well as capture filtrate for subsequent HPLC analysis.

IMPROVE PRECISION AND ACCURACY

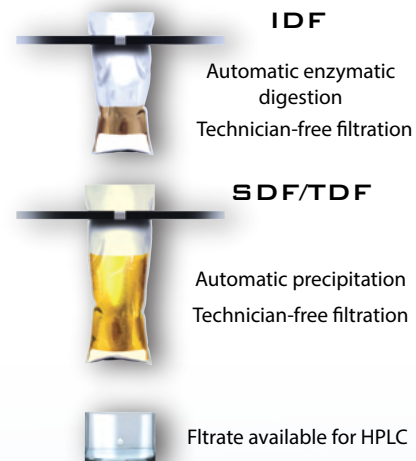
By automating one of the most tedious analytical methods, the ANKOM TDF Dietary Fiber Analyzer drastically reduces technician involvement and measurement error. The ANKOM TDF instrument performs enzymatic digestion, filtration, and rinses by automatically adding and draining chemical solutions and enzymes. Save time with quick filtration and no clogged filters.

REDUCE COST PER ASSAY

The TDF instrument eliminates water baths and filtration flasks. Batch processing reduces the cost per assay and frees up precious lab space to the benefit of budgets, time, and accessibility.



The dual-compartment Filter Bags automate dietary fiber analysis. Each compartment is designed to support unique aspects of the method; from enzymatic digestion to precise filtration and SDF precipitation. Increased filtering surface area reduces the time needed to filter samples. No vacuum flasks and crucibles required.



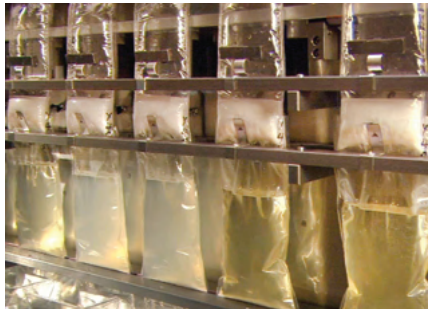
User-friendly touch screen control prompts each step of the run.



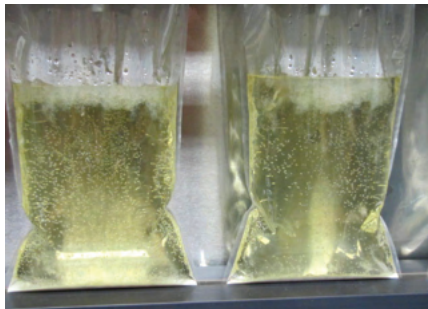
Temperature controlled agitation ensures complete digestion.



Greater filtration surface area dramatically reduces filter time.



Complete and efficient SDF precipitation. No clogged filters.



Convenient periodic maintenance and troubleshooting

The main body of the instrument pivots forward for easy service access.

SPECIFICATIONS

NITROGEN SUPPLY REQUIREMENTS

Supply N₂ pressure 5.5-6.9 bar (80-100 psi)

N₂ purity, Industrial Grade (Grade 4.8)- 99.998% or purer

AMBIENT TEMPERATURE RANGE

19-30 °C (66-86 °F)

INSTRUMENT DIMENSIONS

132 cm L x 77 cm W x 92 cm H

(52" x 30" x 36")

WEIGHT

65 kg (142 lbs)

POWER REQUIREMENTS

100-120 V ~ 50/60Hz 15A

220-240 V ~ 50/60Hz 8A

FILTER BAG

IDF (DF-I), SDF (DF-S), and Flow Thru Filter Bags (DF-FT)

2052 O'Neil Road, Macedon, NY 14502
sales@ankom.com | (315) 986-8090

ANKOM
TECHNOLOGY

Helping To Feed The World!

