

To maintain the longevity and ensure proper function of the ANKOM<sup>FLEX</sup> Analyte Extractor, it is important to make sure your system is in an acceptable state before running analysis.

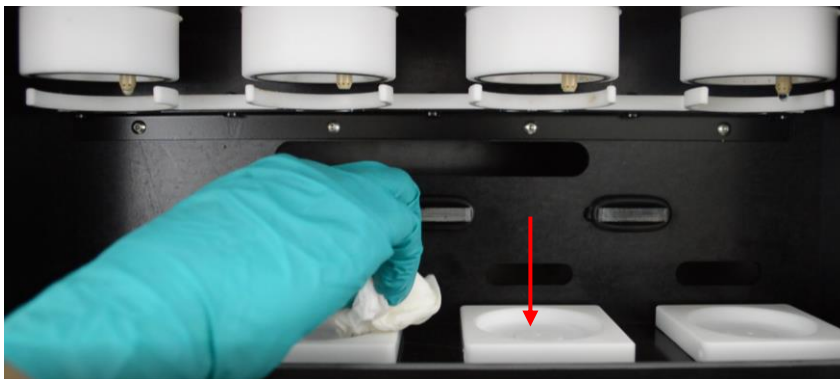
**1. Wipe down the instrument**

Using a wetted towel wipe down the following components:

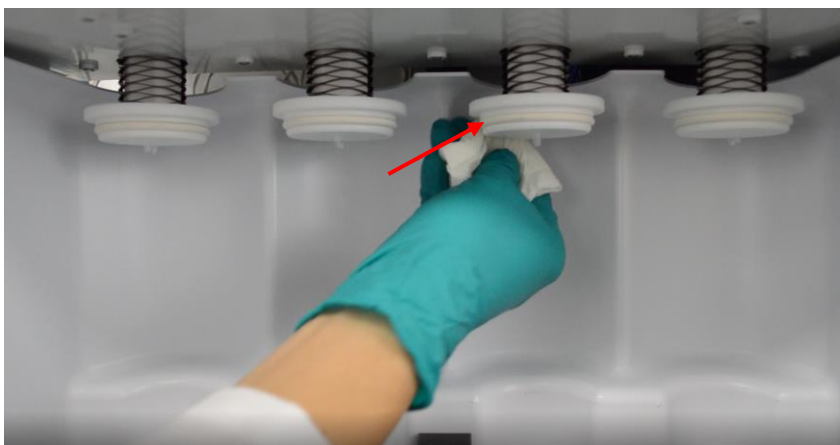
- I. Digestion Oven Spray Nozzles
- II. Digestion Vessel Tops O-rings



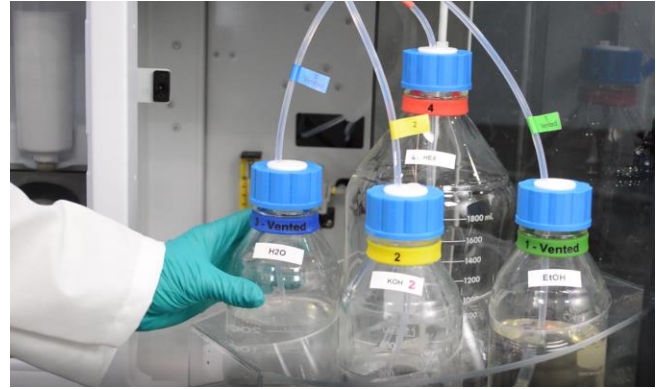
III. Vessel Bases



IV. SPE Column Tops O-rings



2. Refill Reservoir Bottles with appropriate reagents (see FLS005 instructions on how to do this)



3. Reset N2 Pressure and Flowrate to appropriate ranges  
(see FLS003 and FLS004 instructions on how to do this)



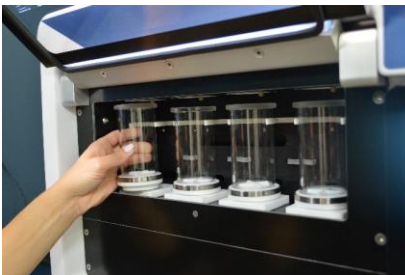
4. **Perform Prime Lines Method - (see page 19-23 in manual- Prime Reservoir and pump lines)**

Set up the instrument for run, Load Vessels, SPE Columns, and RBFs

**Note:** Will need Vessel filters for this method, columns are needed but will not be expensed.

**5. Confirm Function of 3-Way Slide Valve (bolded)**

I. Load Vessels, SPE Columns, and RBF onto instrument



II. Navigate to Diagnostic screen in the command center

III. Open Drain to Columns on screen

IV. Close Globe Vent and Vessel Vent

V. Turn ON Column Nitrogen, wait 15 seconds

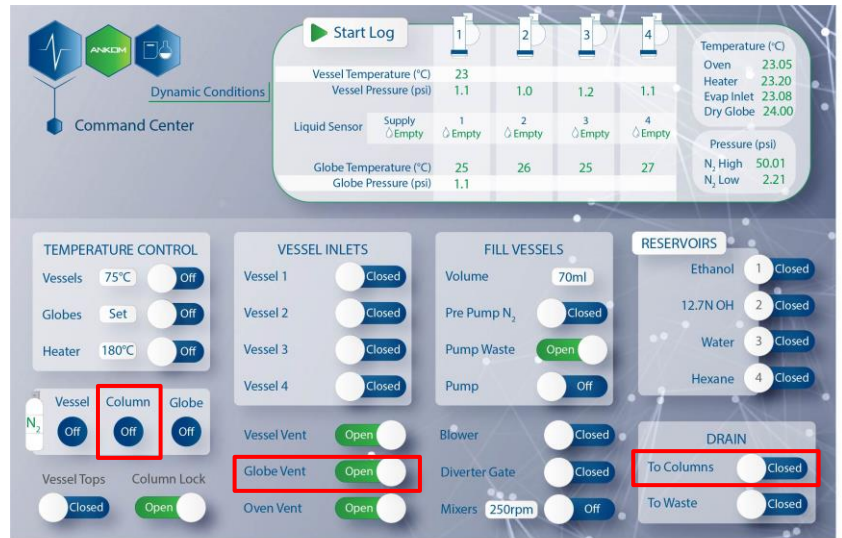
VI. Monitor Vessel Pressures 1-4, you should see all four vessel pressure climb to at least 1psi

Dynamic Conditions					
	1	2	3	4	
Vessel Temperature (°C)	23				
Vessel Pressure (psi)	1.1	1.0	1.2	1.1	
Liquid Sensor	Supply Empty	1 Empty	2 Empty	3 Empty	4 Empty
Globe Temperature (°C)	25	26	25	27	
Globe Pressure (psi)	1.1				

5a. If pressure DOES climb above 1psi in all four vessels,

- I. Turn off Column N2,
- II. Open Globe Vent and Vessel Vent to release pressure
- III. Close Drain to Columns
- IV. Remove Vessels, SPE Columns, and RBFs

TEST COMPLETE - Instrument now ready for operator



5b. If pressure DOES NOT climb above 1psi in all four vessels,

- I. Turn off Column N2
- II. Open Globe Vent
- III. Close Drain to Columns
- IV. Open Drain to Waste, wait 5 seconds, then close Drain to waste
- V. Retry steps Siii-vi

**NOTE: If test fails again, please contact ANKOM Technology**

