

Replace all four mixer round belts (part# 9412). These are included in the FLEX maintenance kit (part# FLEX66) or can be purchased separately.

Support Items:

Round Belt 1/8" x 9.5"
(Qty 4- part# 9412)



3mm Tee Handle Hex Wrench
1/8" Hex Driver
90 Degree Angled Pick
14mm Open End Wrench
Hex Wrench Set



1. Use the 1/8" Hex Driver to remove the four screws on the front access panel, then remove the panel.



2. Open the digestion oven door and use the 5/64" Allen Hex wrench to remove the center screw on the oven face plate.



3. Remove the four screws from the oven face plate using the 1/8" Hex Driver.

Hold the oven face plate in place when removing the last screw. This will prevent it plate from tipping forward and potentially falling off of the instrument.



4. Carefully pull the oven face plate away from the instrument but do not completely detach.



There are wires for the LED lights still connected to the instrument in the upper left corner of the oven face plate.

DO NOT disconnect.



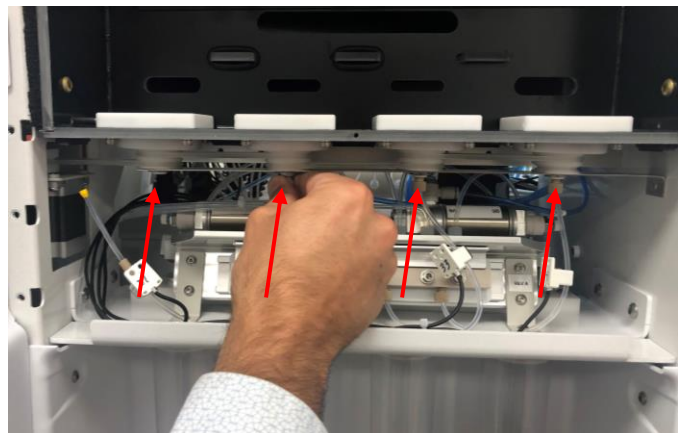
Carefully close the oven door onto the face plate and place the oven face plate on top of the instrument so that it is out of the way.



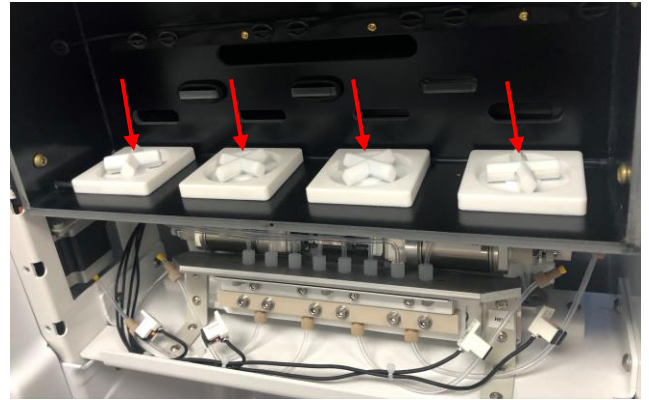
There should be enough slack in the wires for this to be possible. **DO NOT disconnect the wires.**



5. Unscrew all four of the vessel drain lines below each mixer.



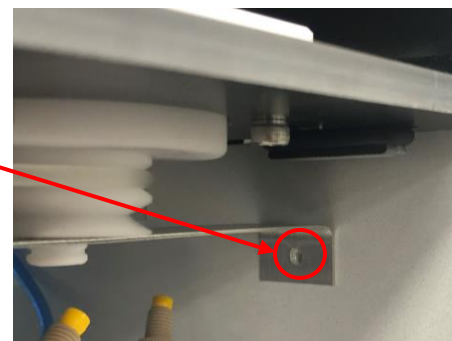
- Place a magnetic stir bar on each vessel base. This holds the magnetic spinners below in place.



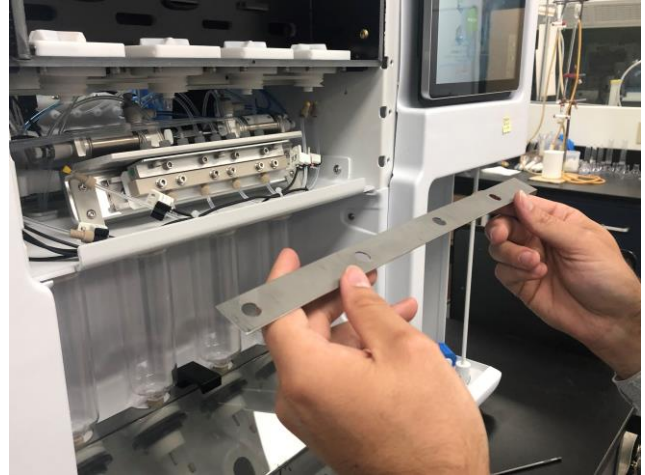
- Locate the four retaining clips below the stabilizer plate. Using the 90-degree angled pick, pull the retaining clips off the magnetic spinner shafts and set aside.



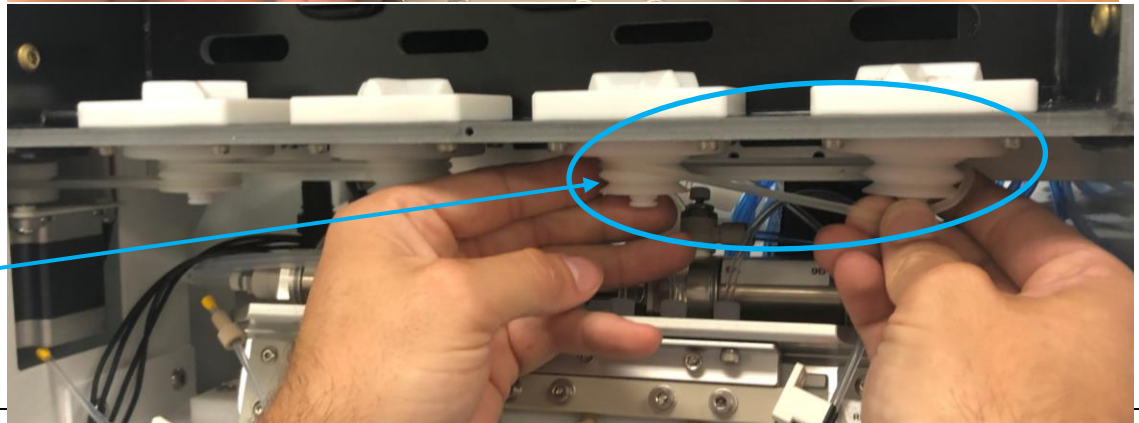
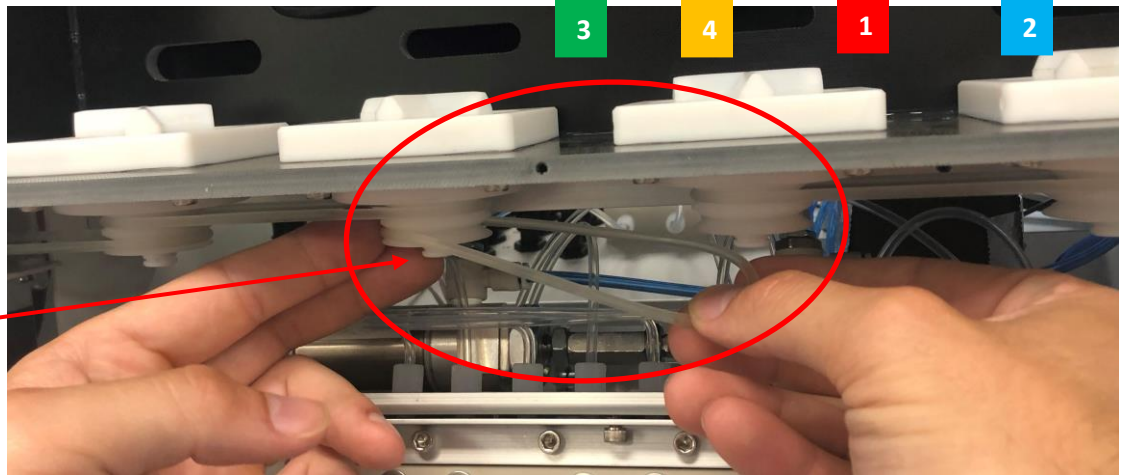
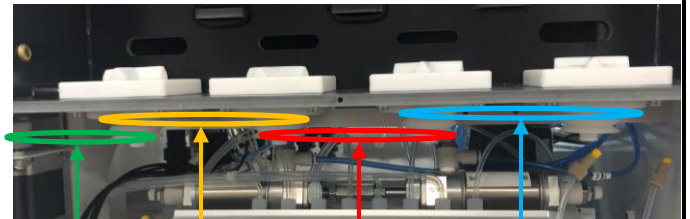
- Observe the right side of the stabilizer plate and ensure that there is **NO** set screw connecting it to the wall. There should not be a screw, remove if there is one.

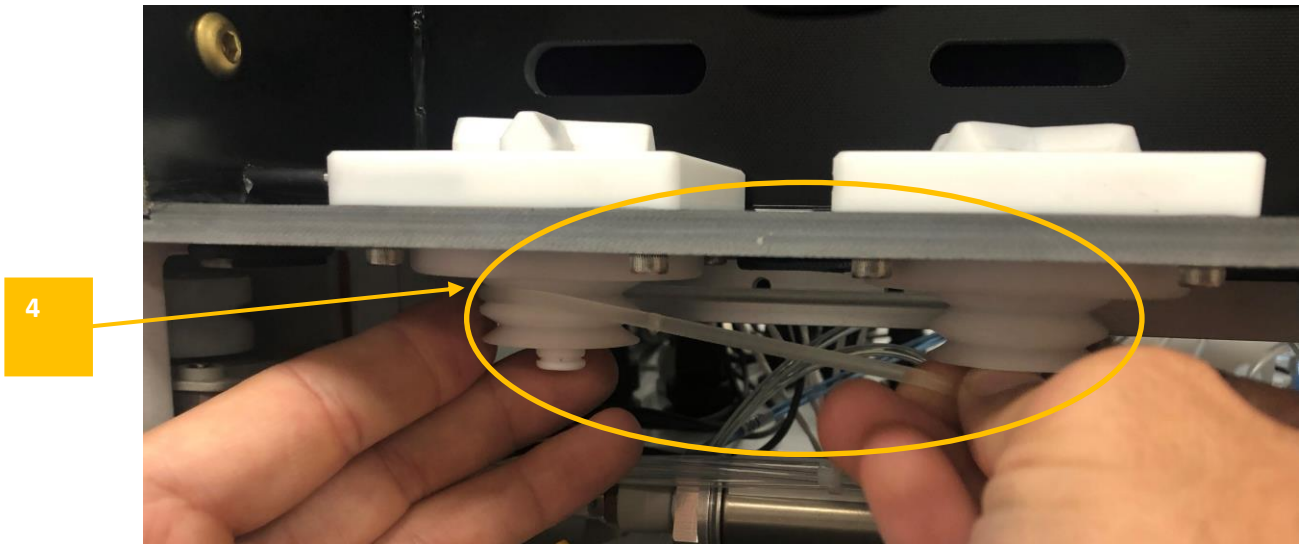
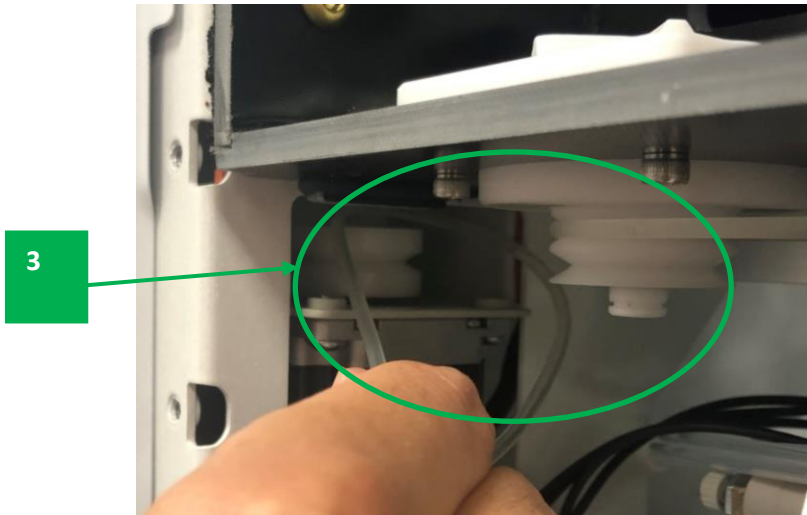


9. Remove the stabilizer plate and set aside.

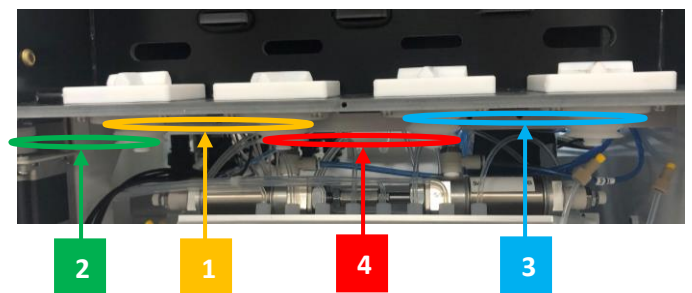


10. Remove all four of the round belts in the colored specified order.

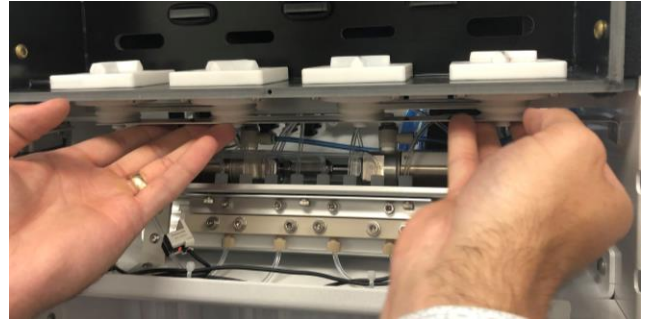




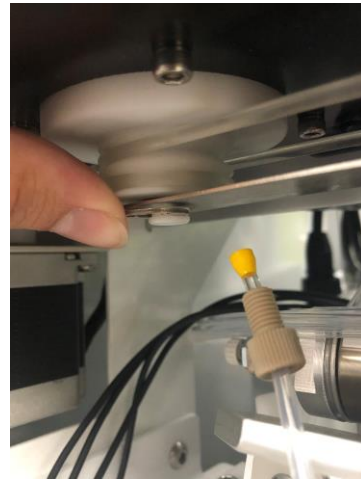
11. Install the new round belts in the colored specified order. Make sure that the belts are completely in the grooves



12. Replace the stabilizer plate.



13. Replace the retaining clips into their grooves by pushing them until they are completely against the magnetic spinner shafts.



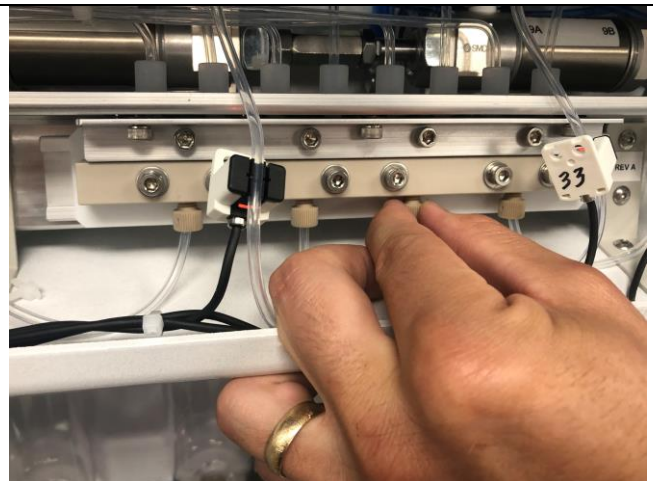
14. Push down on the stabilizer plate so that it is flush against the retaining clips to allow magnetic spinners to rotate easily without rubbing against the digestion oven.



15. Reattach the fluid lines, making sure that they are screwed straight in. BE CAREFUL not to cross thread.



16. Hand tighten the lower tube fittings to ensure that they have not become loose.



17. Go to the Command Center on the HMI and turn on the mixers. Observe the mixer round belts, to ensure they are rotating properly and not making any squeaking noise.

18. Remove the oven face plate from the top of the instrument and open the oven door.



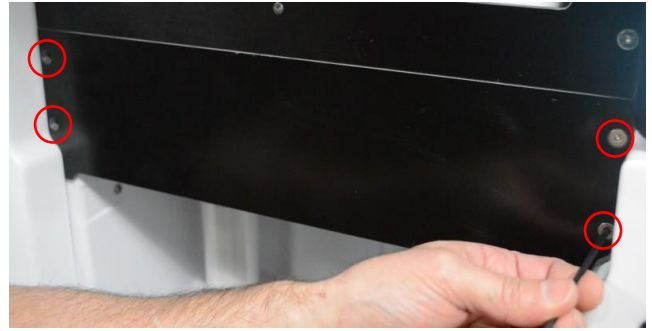
19. To reinstall the oven face plate, make sure that the LED light's wires in the upper left corner are tucked inside and not pinched.



20. Hold the oven face plate in place while screwing in the five screws previously removed.



21. Reinstall the front access panel.



22. Run a manual pressure check (FLS020) to confirm that everything is operating correctly.