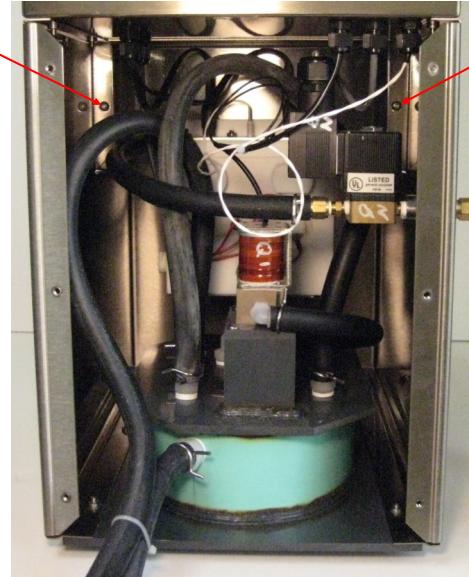


Heater Replacement HC1/HCII



Note:
Before working on the instrument, always turn it off and unplug it from the power outlet.



1. Remove the cabinet back and remove the six screws.

2. Remove the two heater cover screws from the inside of the cabinet.



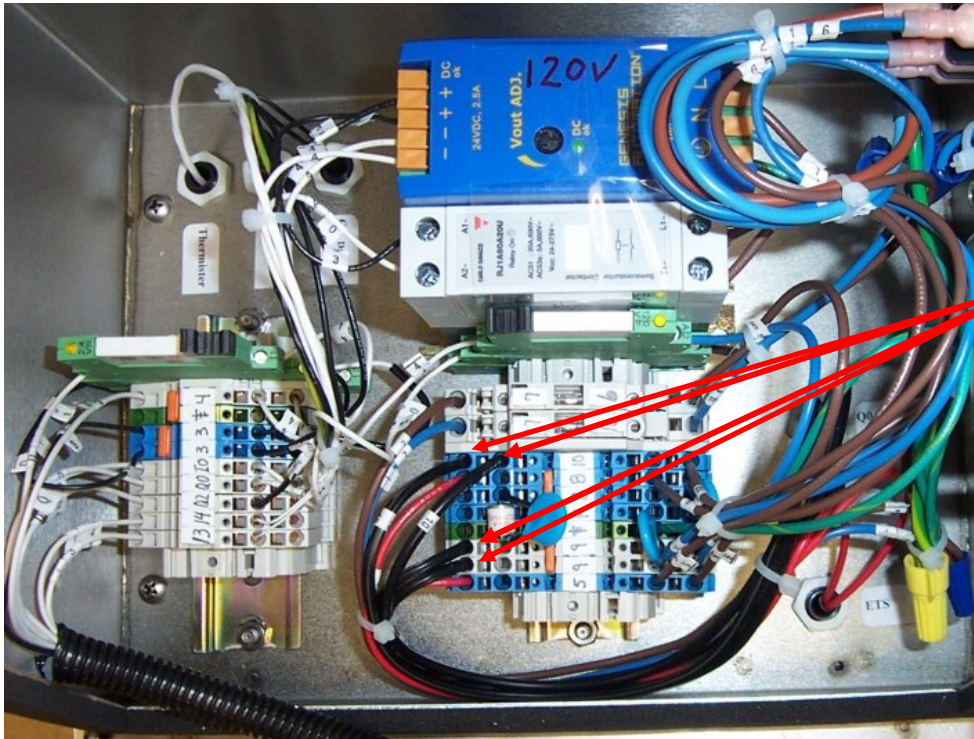
3. Remove the heater cover from the front of the instrument.



4. Remove the two electrical cabinet screws open cabinet by pulling forward.

Heater Replacement HC1/HCII

120V Wiring Pictured Below



120V– Each heater will have 2 black wires. one will be labeled 9 the other 10. (Pictured)

220V– Each heater will have 2 black wires. One will be labeled 9 & 10 the other will be 10 and T1

6. Remove all 4 Heater wires. Each heater will have #9 & #10.

NOTE: Refer to next picture FIGURE A for directions on removing a wire.

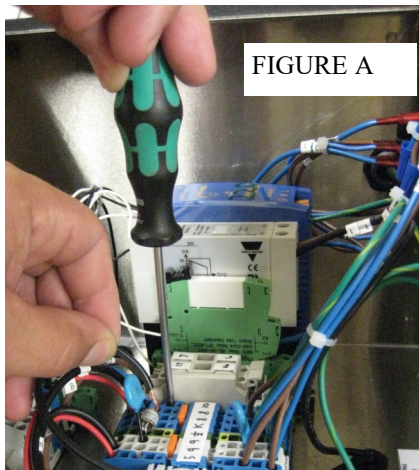


FIGURE A

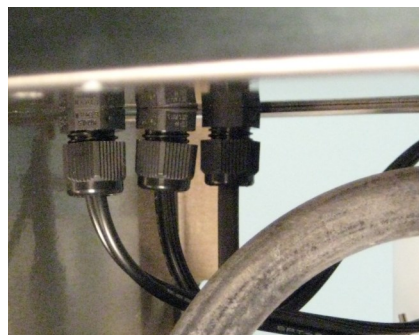


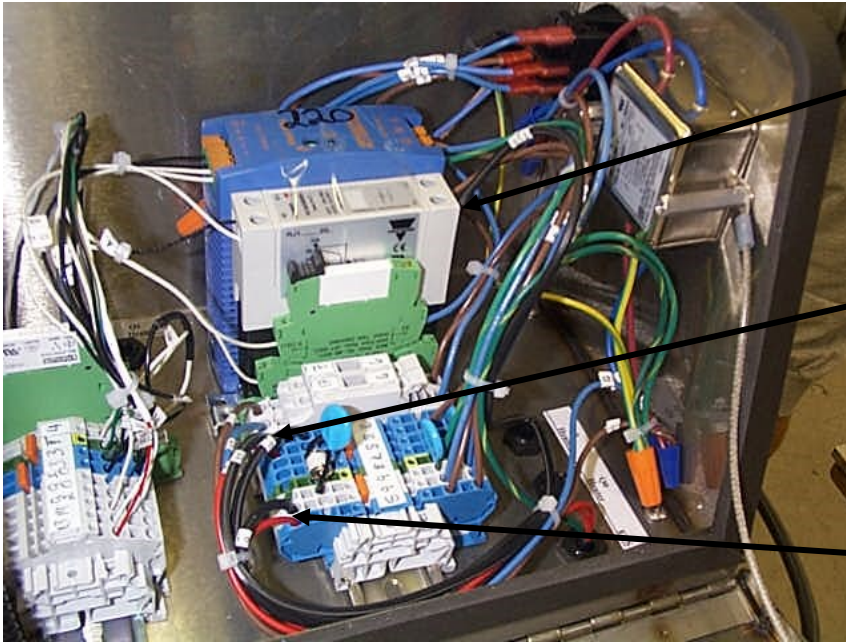
Figure A. Using the screw driver provided, remove the wires that need to be replaced.

7. Loose each Cabinet Bulkhead Fitting for the wires that are being replaced. Pull the wires through the fittings.

8. Carefully twist and pull and remove the bad Heater Cartridges from the vessel.

Heater Replacement HC1/HCII

Note:220V Wiring Shown



For 220VT1 wire goes into T1 terminal

(2) #10 wires go into #10 terminals

#9 wire goes into #9 terminal

9. Install new Heater Cartridges in Vessel.
10. Wire new Heater Cartridges by inserting wire in correctly numbered terminals.
11. Secure the Electrical Cabinet, the Heater Cover and the Cabinet Back in place with the screws that were removed.