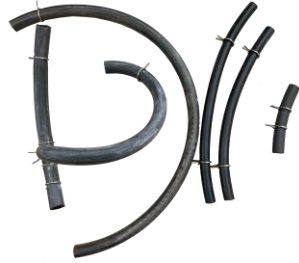


This service procedure details the replacement of the H38 HCI Hose Kit.

Items Needed:

SKU: #H38  
HCI Hose Kit



Hose Clamp Pliers



Side Cutters



Hex 1/8" Driver



1. Power down and unplug the instrument.



2. Remove the six screws on the rear plate of the instrument using a Hex 1/8" driver.



3. Using Side cutters, remove the zip tie holding the drain hose.



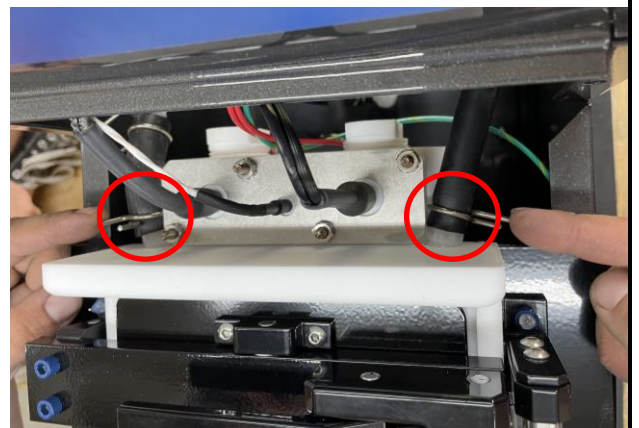
4. Using a Hex 1/8" driver, remove the two screws inside the cabinet that hold the front plate in place. Set screws aside for reassembly.



5. On the front of the instrument, lift the black plate (color may differ), and remove. Set aside for reassembly later.



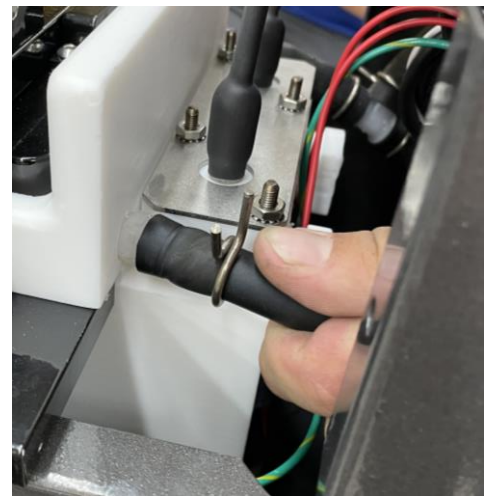
6. First remove the front hoses as shown.



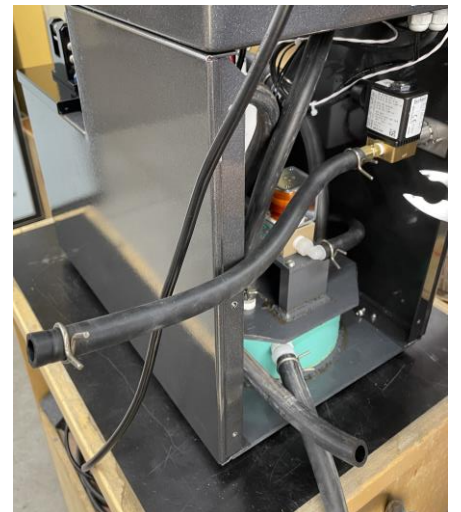
- 6.1. Using the hose clamp pliers, move the hose clamp down the hose to loosen for removal.



- 6.2. Reach in through the rear of the instrument and pull the hose off the nozzle it is attached to.

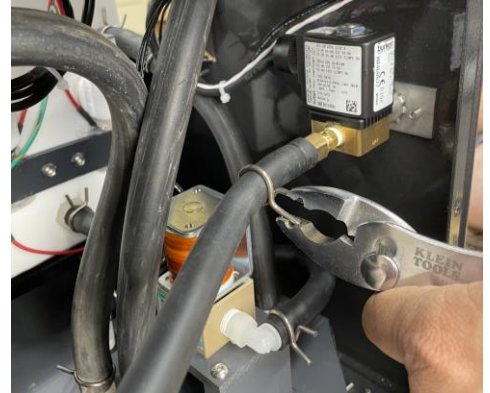


- 6.3. Pull this portion of the hose through the back of the instrument and let hang to the side as shown.

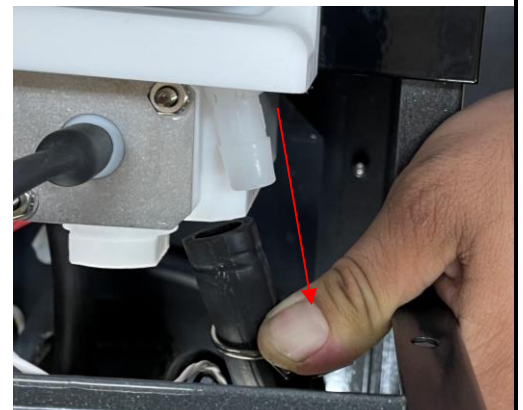
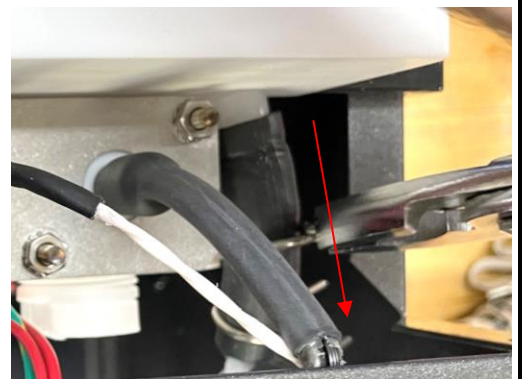




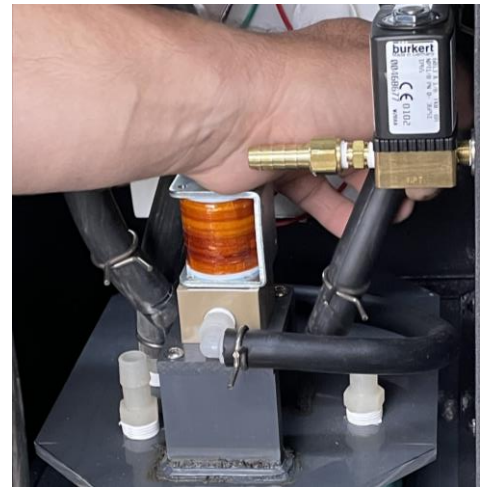
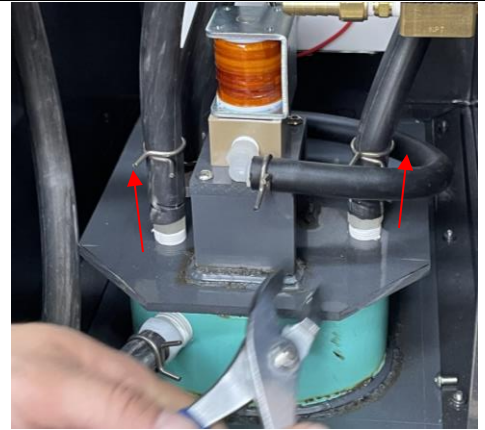
- 6.4. Using the hose clamp pliers, move the hose clamp down the hose, away from the solenoid valve to loosen. Pull the hose off the solenoid valve nozzle to remove, then set old hose aside.



7. On the front right side of the electrical cabinet, move the hose clamp down the hose to loosen and remove.

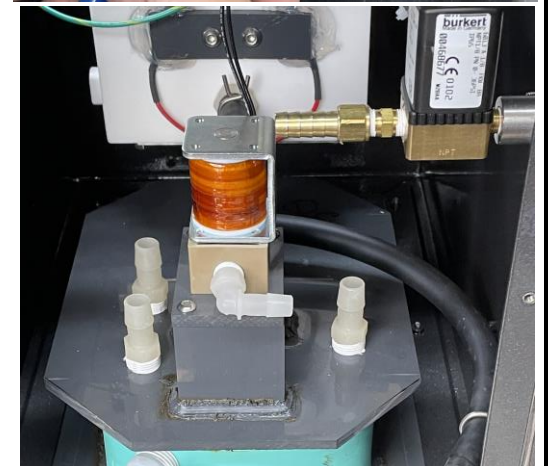


8. On the rear of the instrument, move the hose clamps on both side of the plate up higher on the hose as shown. Then pull the hose off the nozzles to remove.



NOTE: When removing this portion of the hose, be careful not to disturb the surrounding electrical wiring.

9. Using the same process in step 12, remove the two hoses shown.

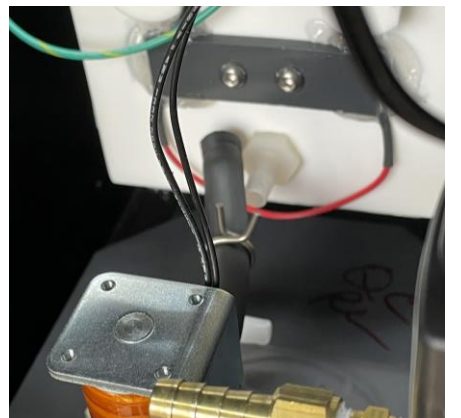
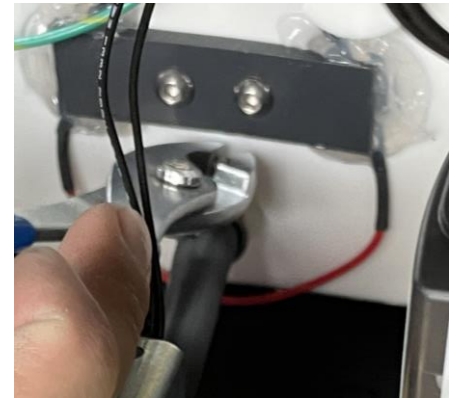


10. Using the same process as step 12, remove the hose located at the far back of the electrical cabinet.



11. Using the same process as step 12, remove the hose located against the back wall of the electrical cabinet.

NOTE: Be careful not to disturb the surrounding electrical wiring.





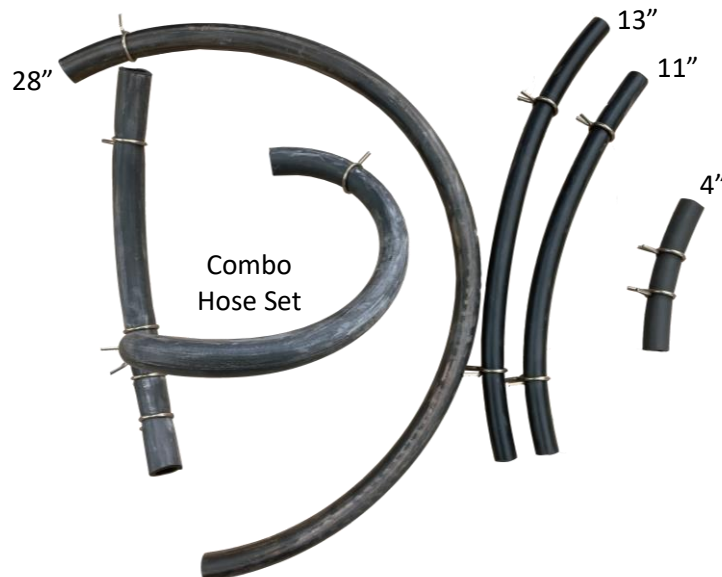
12. Using the same process in step 12, remove the two hoses shown.



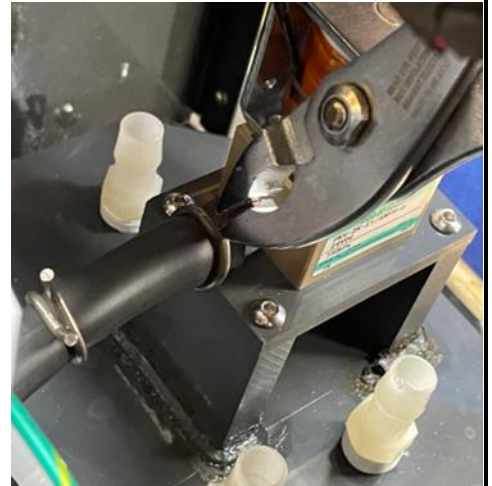
NOTE: If the hose is still too tight to remove, use a small screwdriver as a wedge to help loosen.



13. With all hoses unplugged from the instrument and set aside, acquire a new #H38 HCI Hose Kit for reassembly.



14. Beginning in reverse order of removal, starting with the 4" hose, attach each new hose to its corresponding nozzle by pushing the hose straight onto the nozzle. Then, use the hose clamp pliers to move the hose clamps over the part of the hose that envelops the nozzle to tighten.



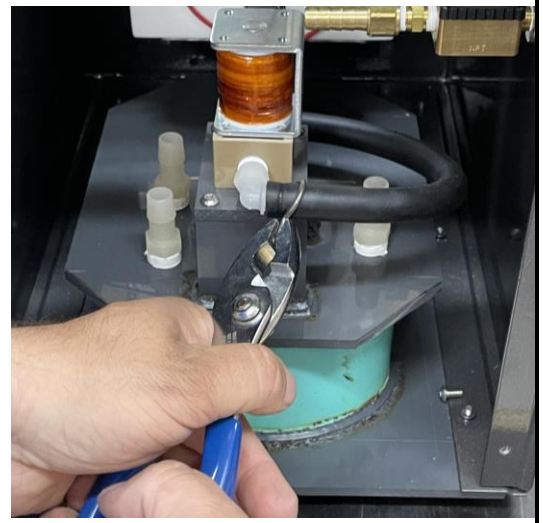
15. Install the other end of the 4" hose located against the back wall of the electrical cabinet.
- NOTE: Be careful not to disturb the surrounding electrical wiring.



16. Using the same process as step 18, install the new 13" hose on the nozzle located at the far back of the electrical cabinet, toward the front of the instrument.



17. Using the same process as step 18, install the other side of the 13" hose as shown.



Then, install the 28" hose as shown on the right.

This is the vent hose the H36 vent filter will be connected to.



18. Next install the Combo Hose Set as shown.



19. On the front left side of the electrical cabinet, install the new hose and hose clamp.





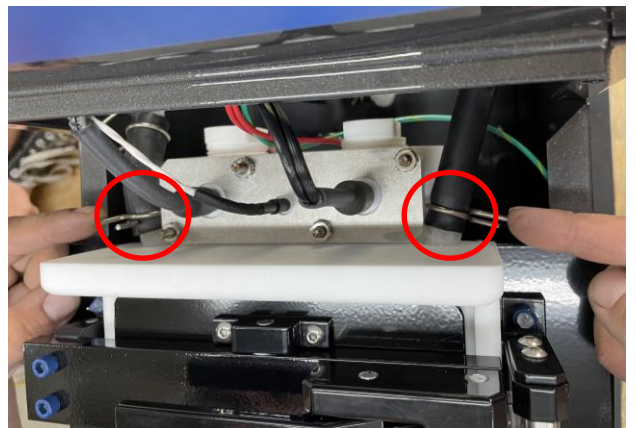
20. Install the 11" hose onto the solenoid valve nozzle.



21. Install the hose on the back of the electrical plate, at the front right side of the instrument.



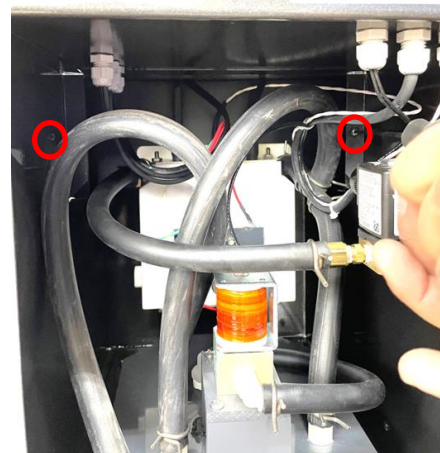
22. Confirm all hose replacements are secure.



23. On the front of the instrument reinstall the back plate on the instrument.



24. Using the Hex driver, reinstall the two screws inside the cabinet that hold the front plate in place.



25. Reattach the back cover and reinstall the six screws using a Hex 1/8" driver.

