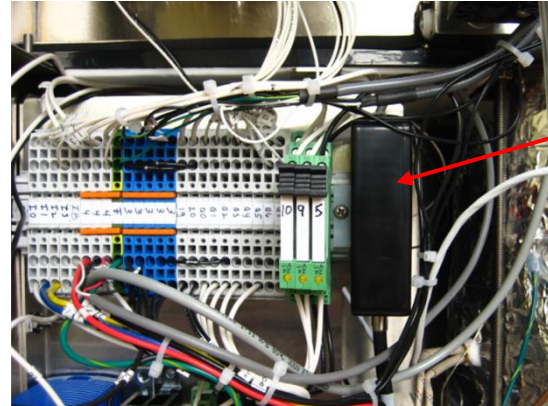
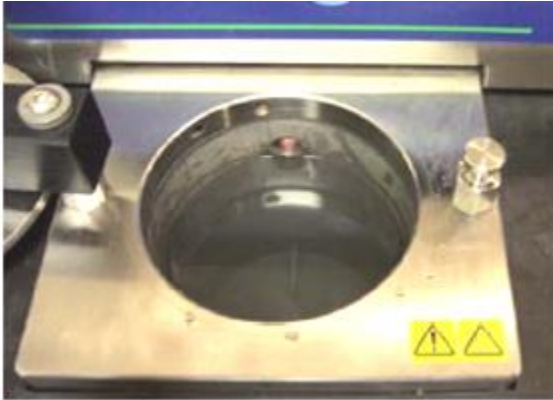


For instruments delivered after 4/09/18. Note: If your A2000/A2000I has a SICK Module, see Service Procedure 10.



Level Sensor

Test the Level Sensor

Start a run. When the screen says “Filling,” record the Analog Level Sensor voltage. It should be between 7-10. Add 1 liter of water, making sure to cover the glass tip. The voltage should drop below 2, and the run should start. If these voltage readings are not correct, we recommend replacing the Glass Tip and Fiber Optic Cable Assembly (A32). See Service Procedure 09.



Glass Sensor Tip

Cleaning the Level Sensor

Clean the tip once a month with daily use of the instrument. Use a cotton swab with alcohol to wipe the tip of the level sensor.