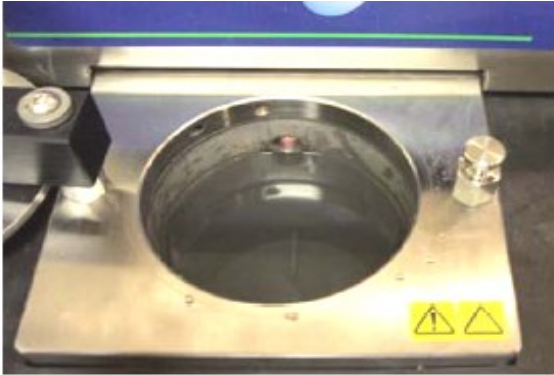


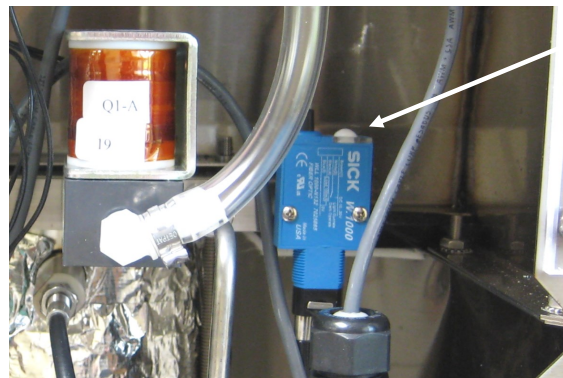
Level Sensor (SICK) Cleaning and Testing A2000/A2000I



Water is below the tip. Light is on.

Test the Level Sensor-

Turn the A2000 on and fill the vessel with water to just below the level sensor. Place an object (a beaker works well) in the water to raise and lower the liquid level several times. Verify that the light on the fiber optic unit turns off when water covers the glass tip and turns on when the level is below the tip. Repeat several times to test for proper function. If the level sensor is not functioning properly, follow the steps below to train the level sensor.



Water covers the tip. Light is off.



Training the Level Sensor-

1. Remove the back panel.
2. Make sure the water is not covering the level sensor tip in the vessel. Clean the tip with a cotton swab and alcohol, dry.
3. Press and hold the white button on the fiber optic unit until the yellow light turns back on.
4. Repeat the "Test Sensor" procedure above.
5. Contact ANKOM Technology if you are unable to train the sensor or if the relay does not switch.

Level Sensor (SICK) Cleaning and Testing A2000/A2000I



Glass Sensor Tip

Fiber Optic Level Sensor

Clean the tip once a month with daily use of the instrument. Use a cotton swab with alcohol to wipe the tip of the level sensor.