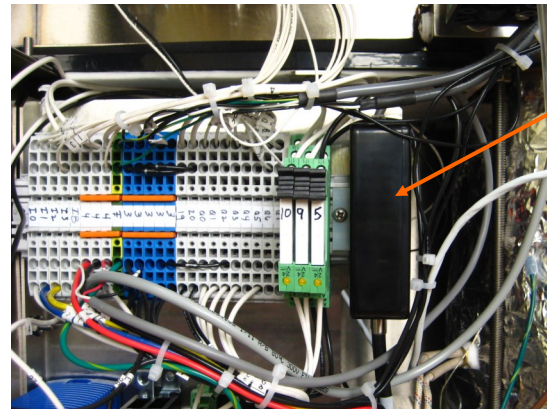
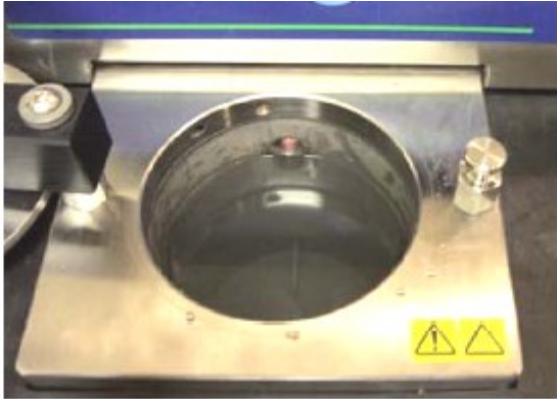


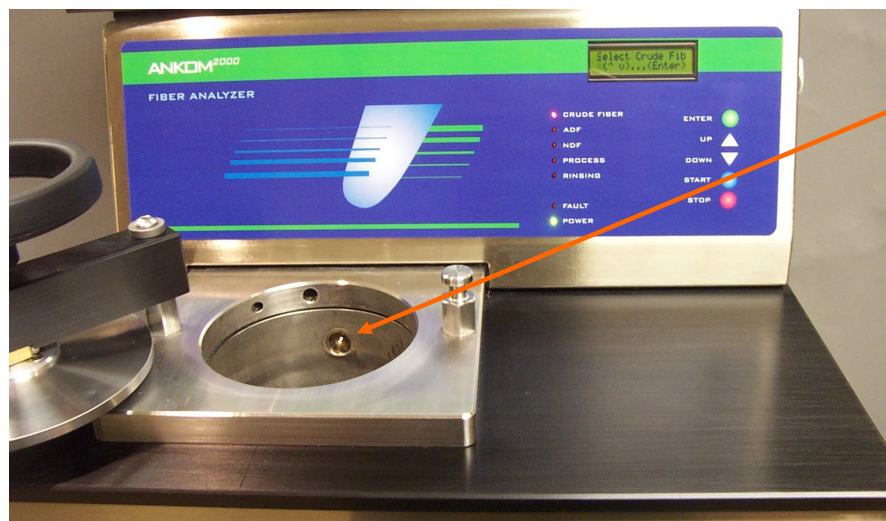
Level Sensor (Analog) Cleaning and Testing DELTA/DELTAI, A2000/A2000I



Level
Sensor

Test the Level Sensor

Remove the bag suspender. Start a run. When the screen says “Filling,” record the Level Sensor voltage on the display. It should be between 7 - 10. Add 1 liter of water, making sure to cover the glass tip. The voltage should drop below 2, and the run should start. If these voltage readings are not correct, Clean the Level Sensor following procedure below. If this doesn't bring the voltages in line, we recommend replacing the Glass Tip and Fiber Optic Cable Assembly (A32). See Service Procedure 09.



Glass Sensor
Tip

Cleaning the Level Sensor

Clean the tip once a month with daily use of the instrument. Use a cotton swab with alcohol to wipe the tip of the level sensor.