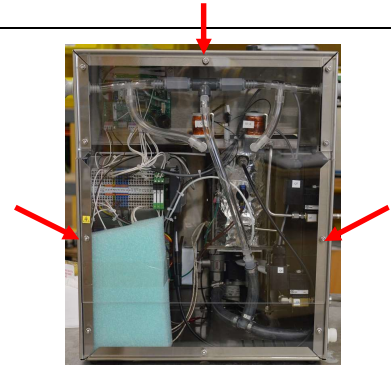


To replace the Fiber Agitator on the ANKOM DELTA Fiber Analyzer, follow the steps below.

The following items will be sent in a replacement package: Agitator (ANKOM part #F8.6)

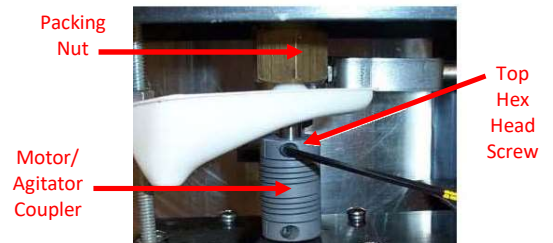
Note: A replacement packing set has been included with this procedure in the event that packing is damaged during installation of the new agitator. *Although it should not be necessary to replace the packaging during this procedure, keep the replacement packing set for future use.*

- 1. Remove the three nuts holding the clear rear panel in place and set the panel aside.**



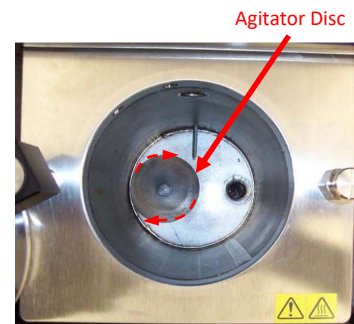
- 2. Locate the Motor/Agitator Coupler and Packing Nut.**

- a. Use a 7/64th Allen wrench to loosen the top hex head screw on the Agitator/Motor Coupler.
- b. Loosen the Packing Nut with a wrench until it is finger loose.



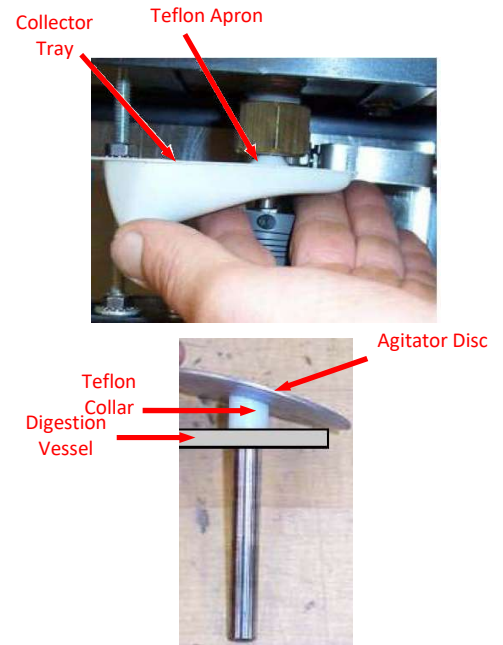
- 3. Remove the Agitator.**

Twist and pull upwards on the Agitator Disc to remove the Agitator from the vessel.



4. Install the new Agitator.

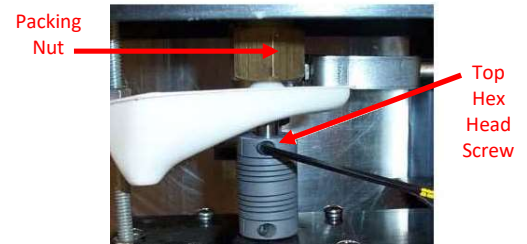
- a. Support the Collector Tray with your hand.
- b. Push and twist the Agitator into the Digestion Vessel opening, inserting it through the Teflon Apron and Collector Tray.



Note: The Agitator Teflon Collar must rest against the bottom of the Digestion Vessel.

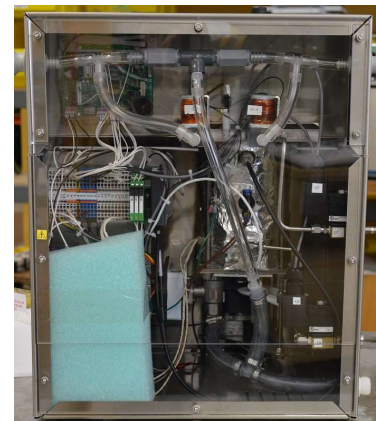
5. Tighten the hex head screw and the Packing Nut.

- a. Using a 7/64th Allen wrench, tighten the top hex head screw on the Agitator/Motor Coupler.
- b. Set the DELTA to “Diag” / “Q5 Agitator” mode. This will turn the agitation on.
- c. Tighten the Packing Nut until you can hear a change in the sound of the motor.
- a. Loosen the Packing Nut *only* an additional 1/8 of a turn.



6. Inspect the Collection Tray and reinstall the back panel.

- a. Allow the instrument to run for four hours, and then proceed to check the Packing Nut and adjust it if necessary.
- b. Closely inspect the Collector Tray to make sure there is no leaking.
- c. If leaking occurs, repeat the Packing Nut adjustment process above, but instead only loosen the Packing Nut 1/16 of a turn.
- d. Secure the nuts holding the rear panel in place.



If there are any further questions, contact ANKOM Technology by calling 315.986.8090.

With this completed, your instrument is now ready to return to use.