

1. Attach the black nitrogen supply tube (part # 8216) to a high pressure (>50psi) nitrogen source .

2. To attach the black nitrogen supply tube, push the tube into the nitrogen supply port located on the back of the instrument.



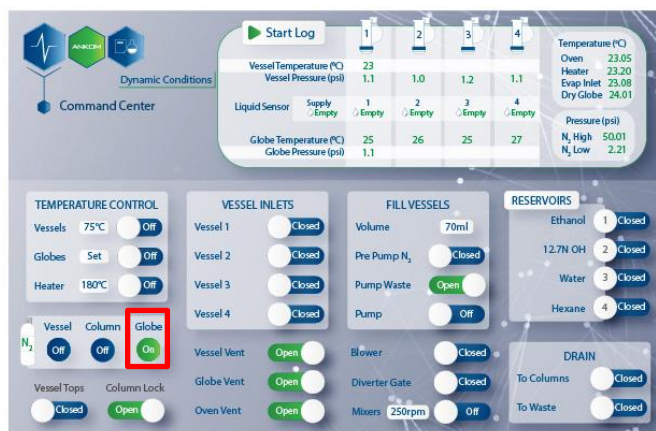
3. Turn nitrogen source on.

Detaching Nitrogen

1. Ensure that the nitrogen source has been shut off.

2. On the HMI, select "DIAGNOSTICS," then select "COMMAND CENTER," turn Globe N2 "On."

This will drop the N2 high pressure below 10psi in order to safely remove the black nitrogen supply tube.



3. Once N2 high pressure drops below 10psi, turn Globe N2 "Off."

Pressure (psi)
N₂ High 9.01
N₂ Low 2.21



4. It is now safe to detach the nitrogen supply tubing from the instrument. To detach the black nitrogen supply tube, push the orange connector located on the nitrogen supply port and pull the tube out.

