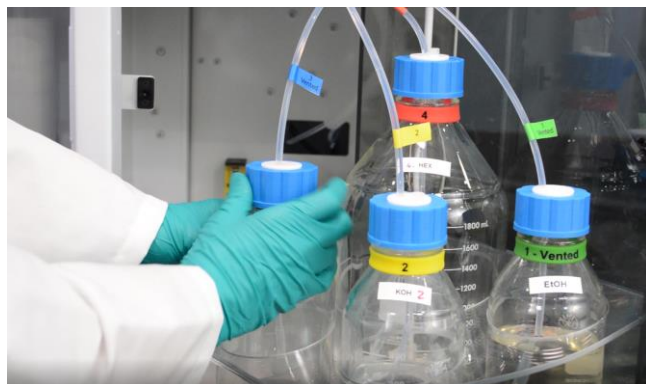


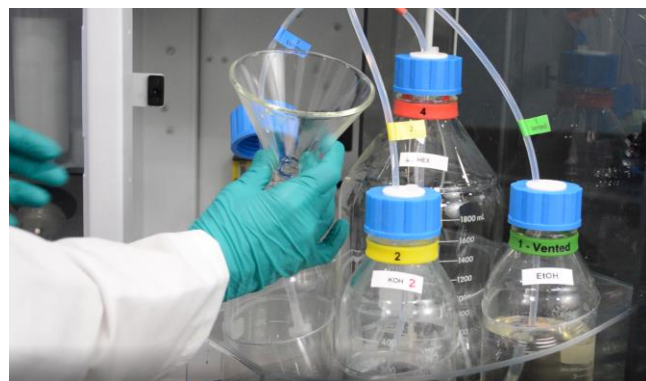
Fill each solution reservoir bottle with the appropriate reagents, refer to Appendix A.

To fill a **vented** reservoir bottle (#1 or 3):

1. **Unscrew the reservoir bottle cap without removing the tube inside the solution reservoir bottle.**



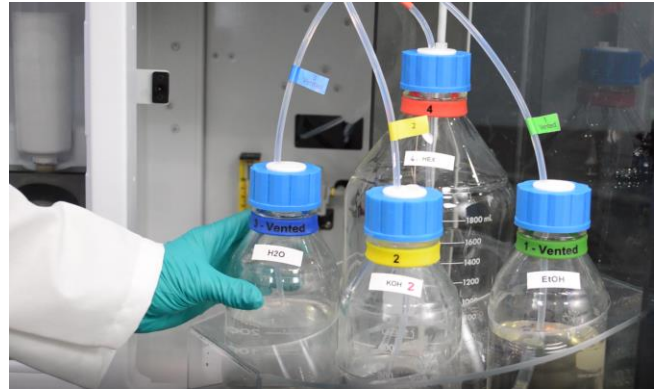
2. **Place a funnel into the reservoir bottle.**



3. **Slowly pour the appropriate solution into the funnel to fill the reservoir bottle.**



4. Screw on the reservoir bottle cap until secure.



To fill an **unvented** reservoir bottle (#2 or 4):

1. Unscrew the reservoir bottle cap and remove the tube.



2. Carefully remove the reservoir bottle.



3. Fill the reservoir bottle under a ventilation hood.



4. Reinstall the reservoir bottle, insert the tube and screw on the reservoir bottle cap until secure.

