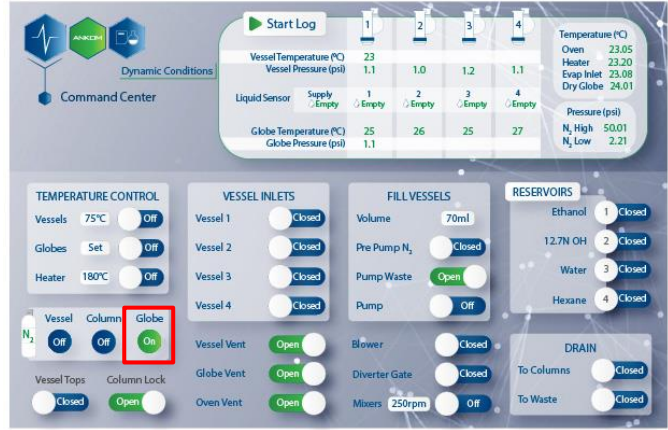


1. Ensure that the nitrogen source has been shut off.

2. On the HMI, select “DIAGNOSTICS,” then select “COMMAND CENTER,” turn Globe N2 “On.”

- a. This will drop the N2 high pressure below 10psi in order to safely remove the black nitrogen supply tube



3. Once N2 high pressure drops below 10psi, turn Globe N2 “Off.”

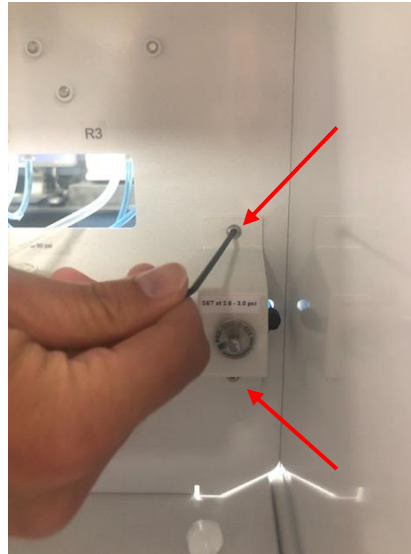


## REPLACING LOW PRESSURE REGULATOR AND BRACKET

1. Fully open Reservoir Door



2. Use 3/32" Hex to remove (2) screws holding regulator bracket and remove bracket from the reservoir area back wall.



3. Detach the 1/4" (black) nitrogen supply tube, push the orange connector ring located on the regulator side of tube and move the regulator to the right.

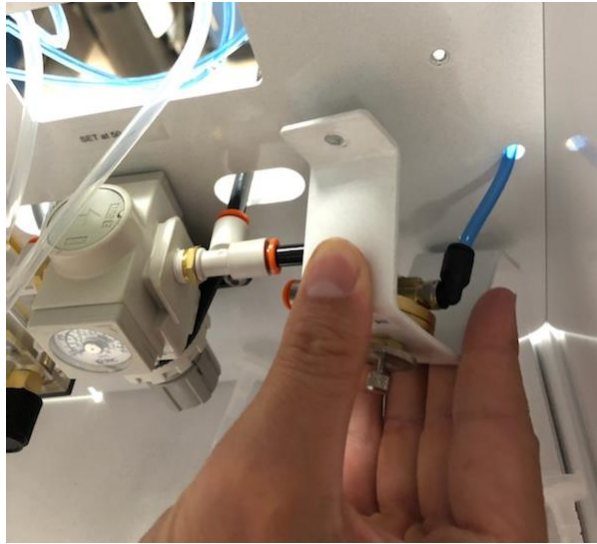


4. Detach the 4mm (blue/yellow) nitrogen tube, push the black connector ring located on the regulator side of tube and pull the tubing out of the fitting.

**When removing regulator, make sure you DO NOT push the 4mm tubing out through the hole in the back wall.**



5. Install the new regulator by attaching the 4mm (blue/yellow) nitrogen tube, inserting the tube into the fitting on the regulator.



Conduct a pull test the tube to make sure it is properly connected.



If there is a loop in the nitrogen line, make sure you retain the loop when reconnecting the regulator. If N2 tube is straight then you do not need to add this loop in the nitrogen line.



6. Attach the ¼" (black) nitrogen tube, insert the tube into fitting on the regulator and conduct a pull test the tube to make sure it is properly connected



7. Mount bracket onto back wall in reservoir area by reinstalling and tightening the (2) mounting screws.



May need to flex bracket to align (2) screw holes.



8. Turn nitrogen source on.
9. Refer to FLS003 Nitrogen Adjustment to reset high and low nitrogen pressures