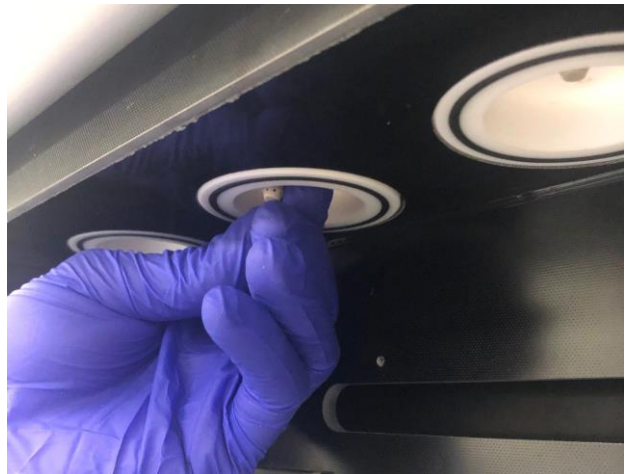


1. Open the oven door. Use the 5/64" Allen Wrench supplied in the FLEX tool kit to remove all four brass screws holding the vessel guide in place. Remove the vessel guide.

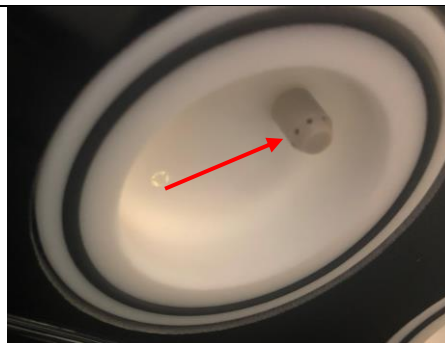


2. While wearing gloves, unscrew all four of the nozzles that are located underneath the vessel tops.



3. Install the new nozzles hand tight.

The nozzles for the for the vessel tops have multiple holes around the end.



4. Reinstall digestion vessel guide.