

Clean out instrument from all chemicals and solutions to prepare for solution switching for new analysis (Typically switching between Total Fat and Vitamin analysis).

**Procedure:**

**1. Assemble Support Items:**

- 500ml Beaker



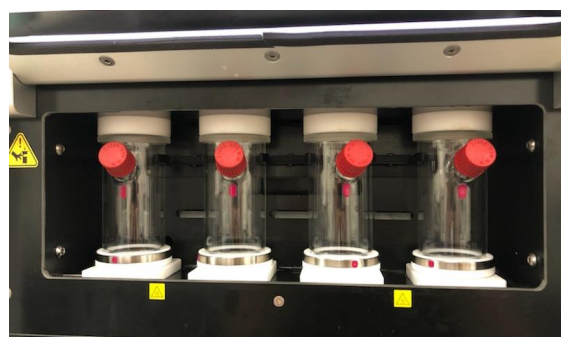
- 95% EtOH Squeeze Bottle
- Empty Squeeze Bottle



**2. Make sure the waste reservoir is empty.**

**3. Pump Distilled Water (DW) to all Vessel Inlets and to Waste.**

- 3.1 Install (4) Digestion Vessels with caps on
- 3.2 Make sure Reservoir #3 is at least half full of DI water
- 3.3 Close Vessel Tops
- 3.4 Open Vessel Inlets 1-4 and open the Vessel Vent
- 3.5 Open Drain to Waste
- 3.6 Open Reservoir #3 (Water)
- 3.7 Set Pump Volume to 80ml
- 3.8 Turn On Pump (it will automatically turn off after volume delivery)
- 3.9 Close Reservoir #3
- 3.10 Turn On Vessel N2 and close the Vessel Vent. Wait 15 seconds.



- 3.11 Turn Off Vessel N2
- 3.12 Close Vessel Inlets 1-4
- 3.13 Close Drain to Waste
- 3.14 Open Vessel Tops
- 3.15 Remove Vessels



**4. Clear Reservoir lines:**

- 4.1 Unscrew reservoir lines from reservoir bottles and place into empty beaker.



- 4.2 Open Pre-pump N2
- 4.3 Open Reservoir #1, and close after 15 seconds
- 4.4 Repeat steps for each Reservoir
- 4.5 Close Pre-pump N2 when completed



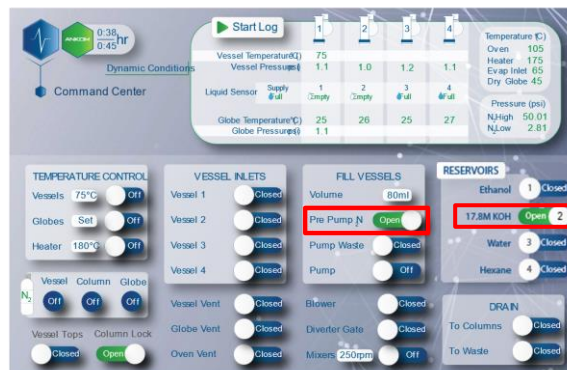
**5. Rinse Reservoir lines with Distilled Water (DW).**

- 5.1 Place the KOH/HCl reservoir line (typically Reservoir line #2) into a 500ml beaker of DI water
- 5.2 Open corresponding reservoir line
- 5.3 Open Pump Waste
- 5.4 Set Pump Volume to 20ml
- 5.5 Turn On Pump (it will automatically turn off after volume delivery)
- 5.6 Close Reservoir line
- 5.7 Close Pump Waste



**6. Clearing Reservoir line**

- 6.1 Keep KOH/HCL (Reservoir Line #2) in the beaker
- 6.2 Open Pre-pump N2
- 6.3 Open corresponding reservoir line and close after 15 seconds
- 6.4 Close Pre-pump N2 when completed





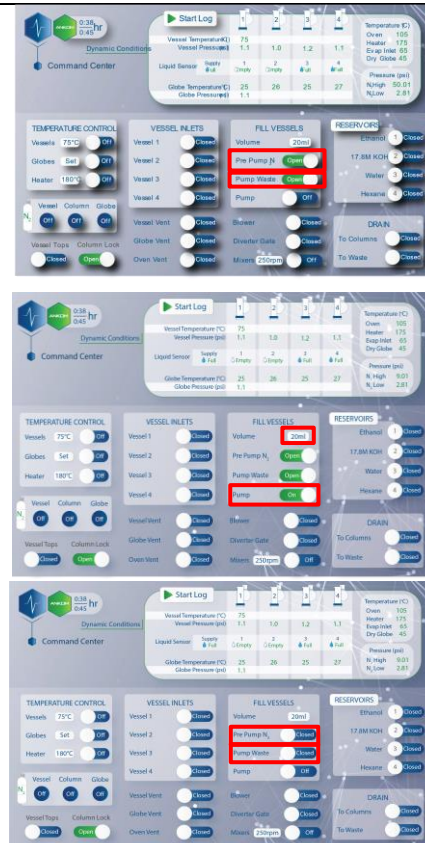
**7. Clearing Pump**

7.1. Remove the Reservoir lines from the beaker of DI water. Dry them with a paper towel.

7.2. Open Pump Waste  
7.3. Open Pre-Pump N2

7.4. Set Pump Volume to 20ml  
7.5. Turn On Pump (it will automatically turn off after volume delivery)

7.6. Close Pre Pump N2  
7.7. Close Pump Waste



**8. Rinse the drain "To Column" lines with 95% EtOH**

8.1 Open Drain "To Column" position  
8.2 Place beaker below SPE Column Top Adapter to catch the 95% EtOH



- 8.3 With a spray bottle manually spray 95% EtOH through the four Vessel Bases
- 8.4 Spray for at least 5 seconds



**9. Purge remaining solution in the drain “To Column” lines.**

- 9.1 Place beaker below SPE Column Top Adapter to catch remaining solution
- 9.2 With an EMPTY spray bottle manually spray air through the four Vessel Bases
- 9.3 Purge residual solution by squeezing the spray bottle at least five times



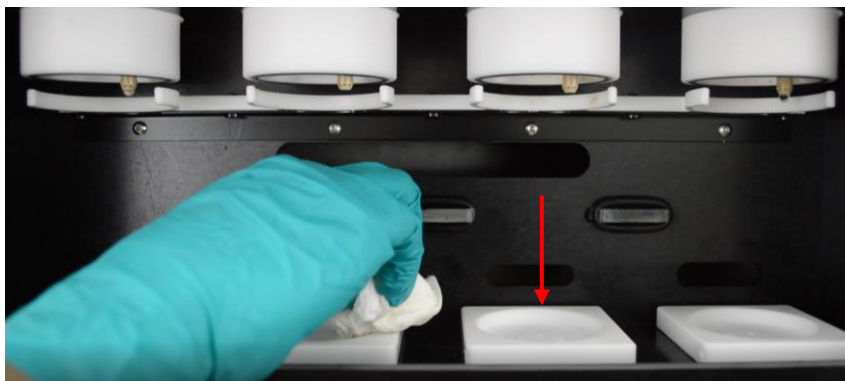
**10. Wipe down the instrument**

Using a wetted towel wipe down the following components:

10.1. Digestion Oven Spray Nozzles



10.2. Digestion Vessel Tops O-rings



10.3. Vessel Bases



10.4. SPE Column Tops O-rings

10.5. Wipe down Round Bottom Flask adapters as well



**11.** When installing your new reservoir bottles for analysis, refer to the Line Prime Procedure found in your FLEX Manual (6.9.3) and conduct the Line Prime accordingly.