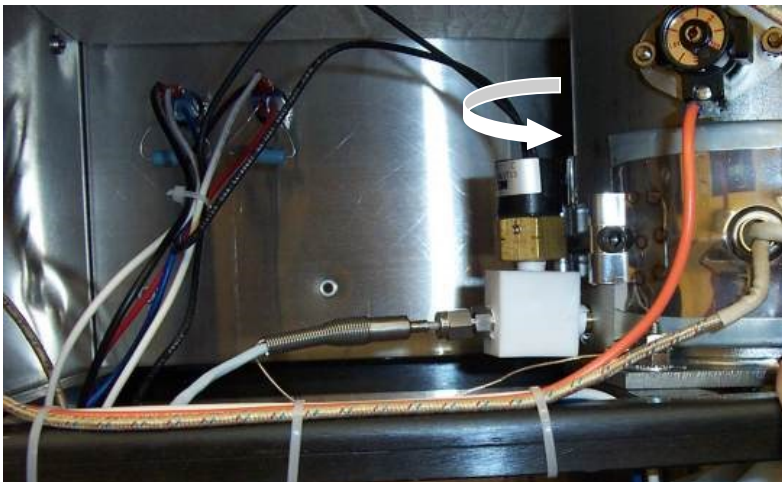


Pressure Switch Replacement A200/A200I



1. Turn off instrument and remove the back panel of the instrument.
2. Remove the pressure switch wire connected to the blue terminal block.

3. Remove the wire and connector from the pressure switch to the Heat Switch.



4. Unscrew the pressure switch from the "T"
5. Screw in the new pressure switch.
6. Connect the wiring.
7. Replace the back
8. Test the instrument by performing an AD determination