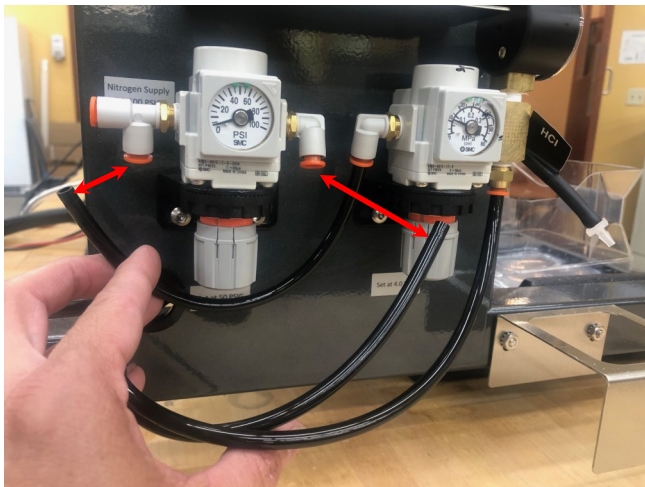


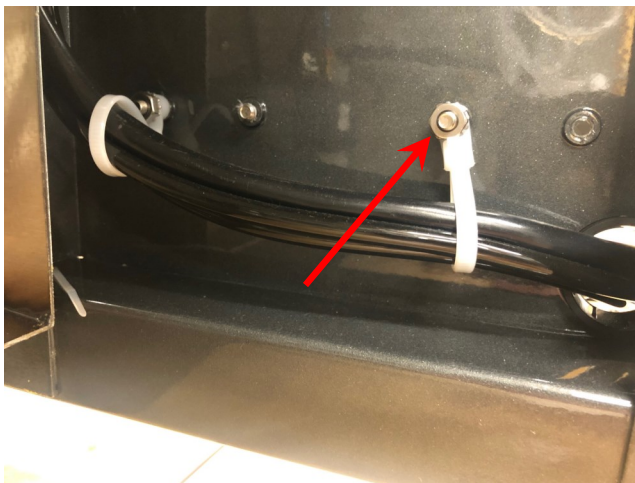
1. **Turn the power off to the ANKOM^{TDF} instrument.** Turn off and disconnect pressurized nitrogen source at the input port to the regulator, marked by the red arrow. Push the orange flange in while pulling out on the black tube.



2. Disconnect the other two nitrogen lines at the regulator as marked with the red arrows.



3. From the inside of the left support leg, identify the nut holding the cable strap in place.



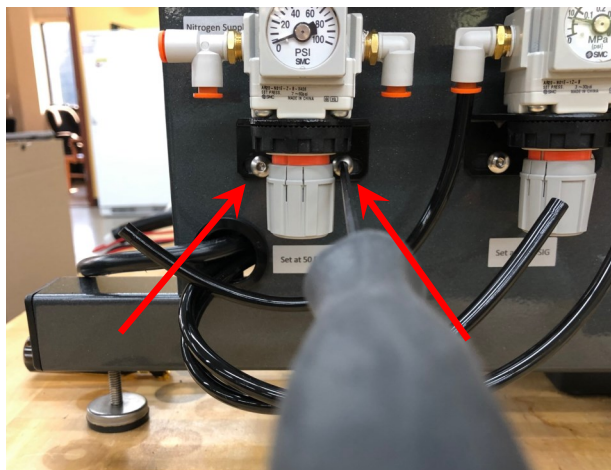
4. With a 3/8" nut driver, remove the nut holding the cable strap in place.



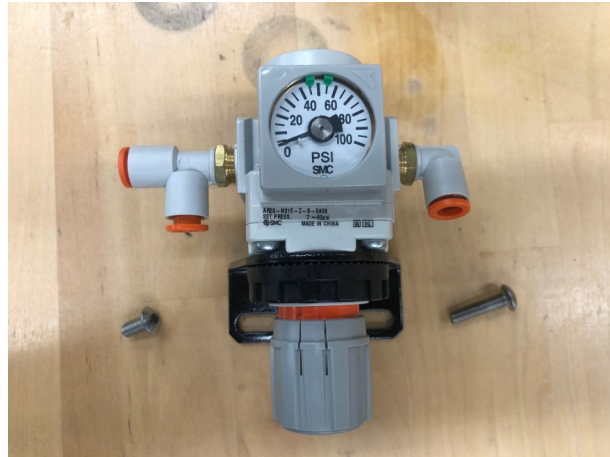
5. Free the cable strap from the back side of the screw.



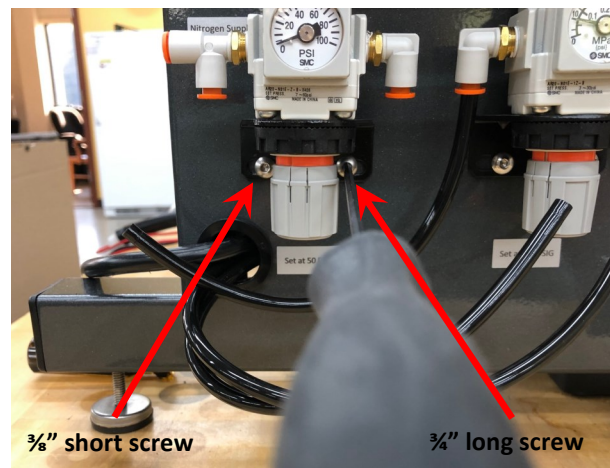
6. Using an 1/8" Hex Driver, remove the two screws holding the TDF61 High Pressure Regulator in place.



7. Obtain the new TDF61 High Pressure Regulator and the two screws that were removed previously.



8. Install the new TDF61 High Pressure Regulator with the short ($\frac{3}{8}$ ") screw on the left and the longer ($\frac{3}{4}$ ") screw on the right.



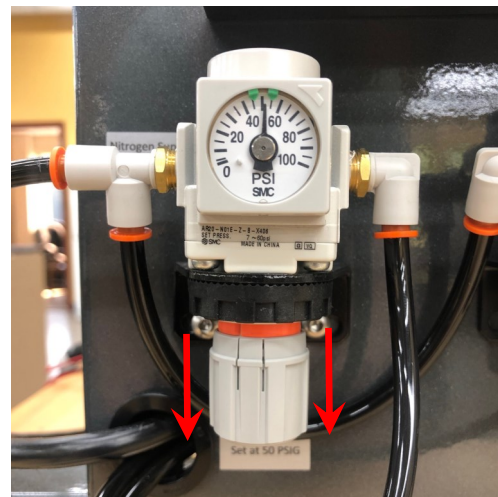
9. Reconnect the black nitrogen lines as shown.



10. Reattach the cable strap from inside the left support leg with the nut removed earlier.



11. Turn the nitrogen back on at its source. Pull down on the grey adjustment knob on the base of the regulator. This exposes the orange ring just above the knob (as shown). With the grey knob pulled down, rotate the knob to adjust the pressure setting to 50—55 psi. With the adjustment complete push the grey adjustment knob back up to lock in the setting.



12. With the regulator set to a gauge pressure of 50 - 55 psi, confirm that the pressure reading on the touch screen (Diagnostics / Pressures) shows 63 - 70 psi absolute pressure.
13. With the pressure check completed the ANKOM^{TDF} Analyzer is ready to be returned to service.

