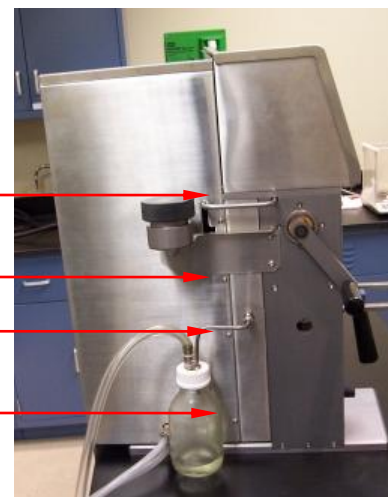


1. Drain the solvent from the XT15.

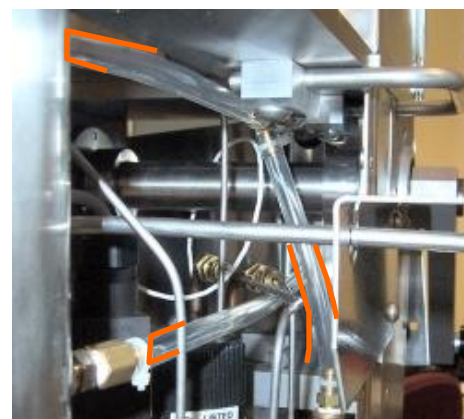
- a. Start an extraction.
- b. Turn the XT15 off after the vessel fills and starts to extract.
- c. Pour the ether out of the vessel then start another extraction.
- d. When the sight glass is empty, shut the XT15 off and remove the ether from the vessel.

2. Remove the cabinet from the XT15.

- a. Using the screwdriver sent with the XT15 remove the four screws on each side of the cabinet.
- b. Lift the cabinet and then pull back to remove.

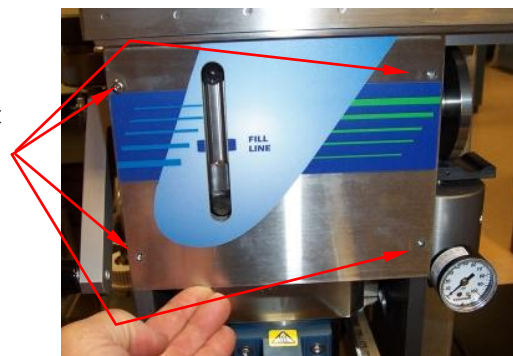


3. Remove the tubing from the reservoir and the vent fittings. They are outlined in orange in the picture shown.



4. Remove the Sight Glass Panel by removing the four screws.

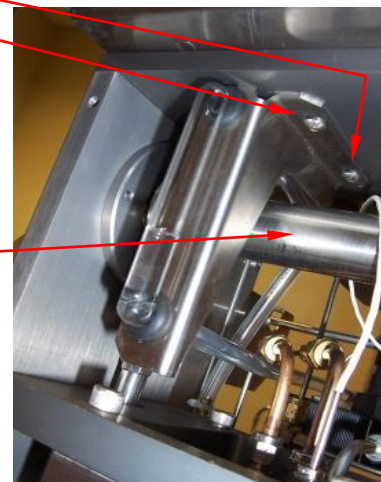
Note: Older versions of XT15 have the Sight Glass held by two rubber grommets in the front panel. Newer XT15's have a slot where the Sight Glass sits. This version is shown.



5. Replace the Sight Glass Assembly.

- a. Remove the screws holding the Sight Glass Bracket in place.
- b. Install the new Sight Glass Bracket. The "T" tubing is routed above the bar and the single tube is routed below the bar. The tubing has been left longer than necessary for custom fitting. Cut the bottom tubes so that it is straight as shown in the picture.

Bar



6. Secure the tube onto the barb.

- a. Apply vegetable oil to the tube interior with a cotton swab.
- b. Push the new tubing onto the barb fittings shown in step 3.
Note: The tube is actually a thin wall Teflon tube inside of a thicker outer tube. When you insert the tube onto the barb, be careful not to crumple the inner tube.
- c. Secure the tube onto the barb with the clamp.

7. Fill the XT15 with solvent and check for leaks.

Note: The top tube and vent tube cannot be checked until the XT15 has recycled solvent after an extraction. Keep the cabinet back off until the tubing has been observed after recycling the solvent and the sight tube fills to the full level.