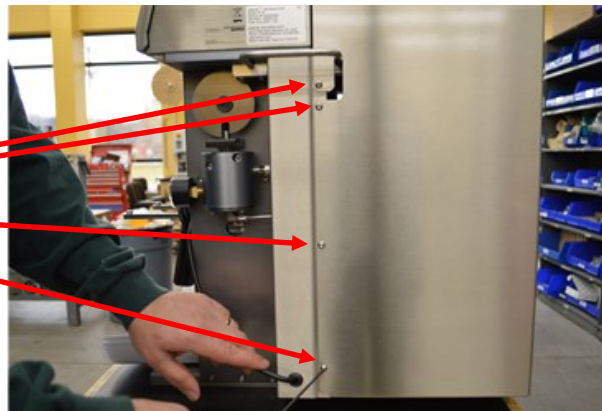


1. Remove the back of cabinet.

A. Using a 1/8" Allen wrench remove the eight screws (four on each side of instrument) that secure the back cabinet onto the instrument. Set aside the screws for later use.

B. Lift up then pull back so the handles on each side slide out of the notched groove.

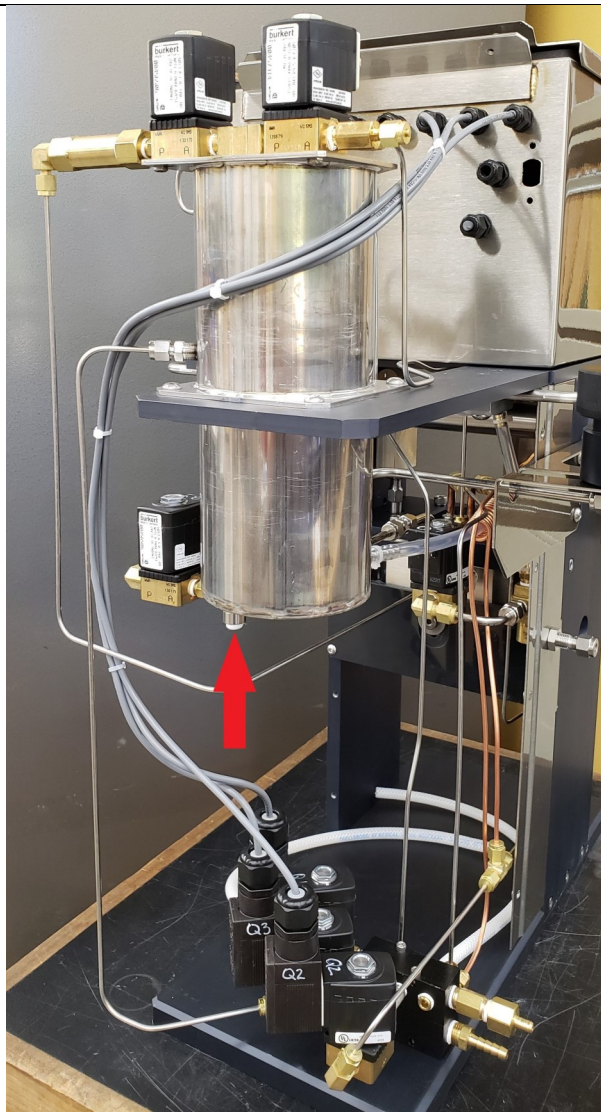
Screws



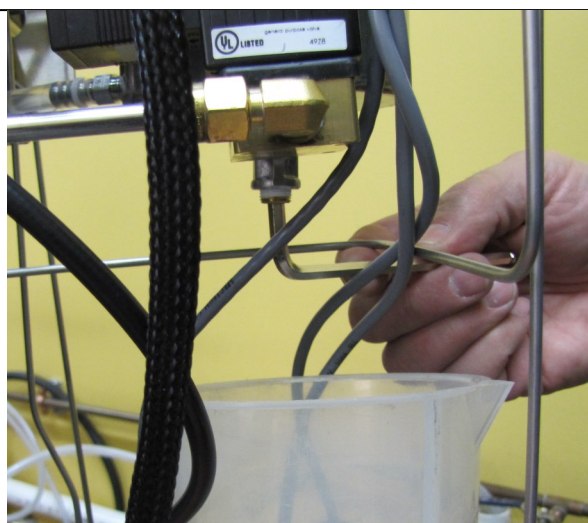
Notched groove



2. Locate the solvent reservoir drain plug Indicated by red arrow.

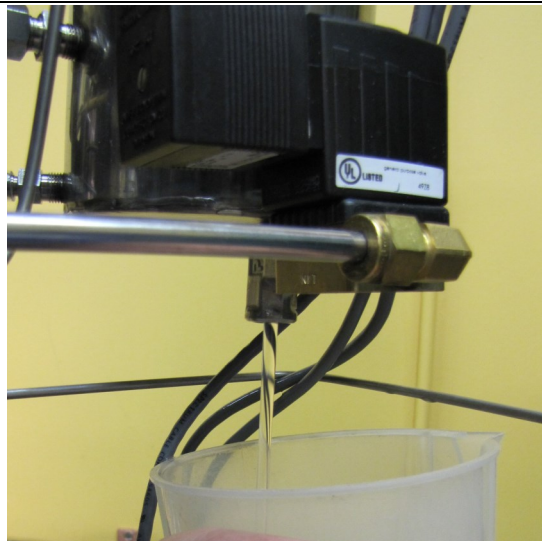


3. Use a 3/16" Allen wrench to remove the Drain plug. Be sure to have a beaker readily available to Catch the solvent with a beaker.



4. Solvent should flow out freely like the picture to the right. If solvent doesn't flow there may be debris blocking the port. You can clear the blockage by poking through it using a skinny screw driver.

5. Once the solvent completely drains out, you may now pour more solvent into the fill port to flush the reservoir (remember to catch solvent in a beaker). Continue flushing the reservoir until the solvent is clear and free of debris.



6. Once you have flushed the reservoir, reinstall the drain plug (you may have to reapply 1/4 " pipe tape to the plug). Once the plug is in place, fill the XT15 with approx. 500ML of the desired solvent. The XT15 is now ready to perform another run.