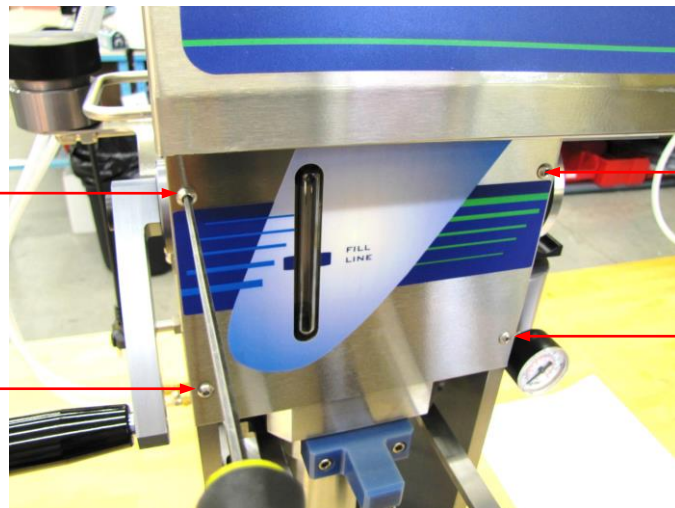


To check the accuracy of the XT Temperature Probe follow the procedure outlined below.

1. Remove the front cover.

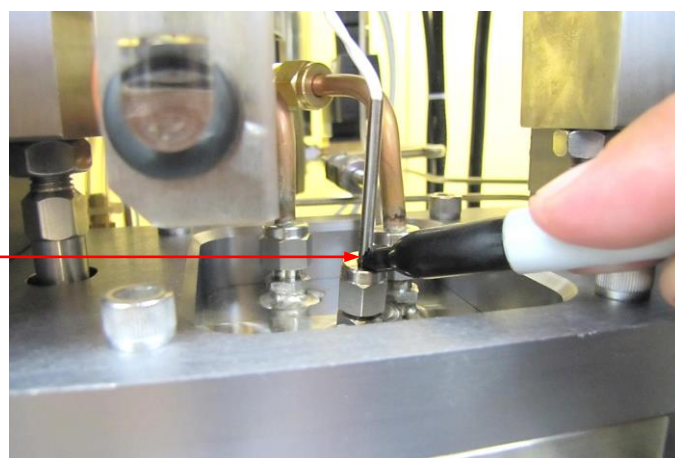
Remove four screws on the front cover of the instrument using a $\frac{1}{8}$ " Allen Screw Driver and set the front cover and screws aside to be reassembled later.

Caution: Before proceeding make sure the previous run is complete, there is no solvent in the vessel and that the pressure gauge reads zero.



2. Mark the Temperature Probe.

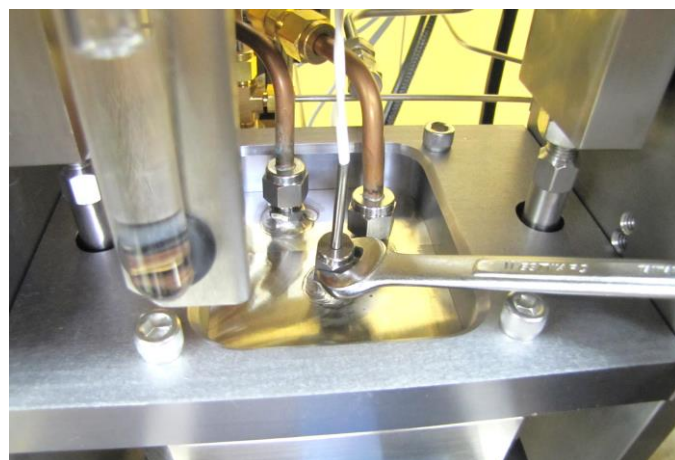
Make a mark at the base of the temperature probe using a black marker. This is so you will know how far the temperature probe is to be inserted when reassembling.



3. Loosen the Temperature Probe Fitting.

With the front cover removed, loosen the temperature probe fitting with a $\frac{7}{16}$ " wrench.

Note: Do not take the nut off of the fitting.



4. Remove the Temperature Probe.

Carefully pull the Temperature Probe out of the fitting.



5. Position the Thermometer and Probe.

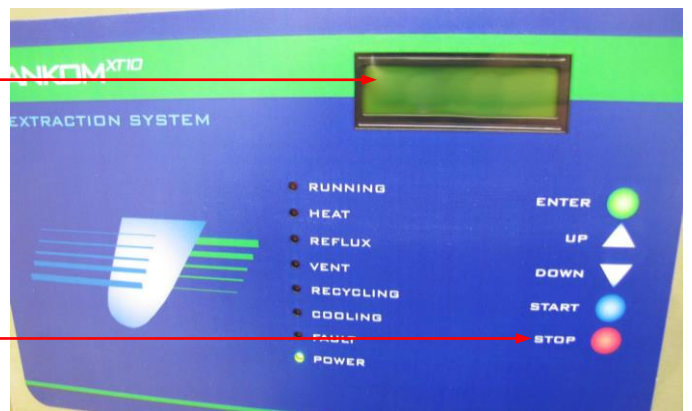
- a. Retrieve a Calibrated Thermometer.
- b. Place the end of the Temperature Probe and the end of the Calibrated Thermometer into a beaker of warm tap water.
- c. Press the red STOP button on the front of the instrument to see the temperature on the display.

Calibrated
Thermometer



Display

STOP Button



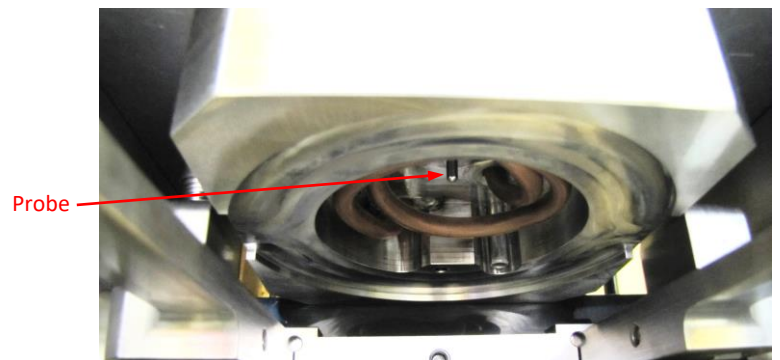
6. Compare the temperatures.

Compare the temperature on the Calibrated Thermometer to the temperature on the Instrument Display. The temperature reading on each screen should be within 2 degrees of each other.



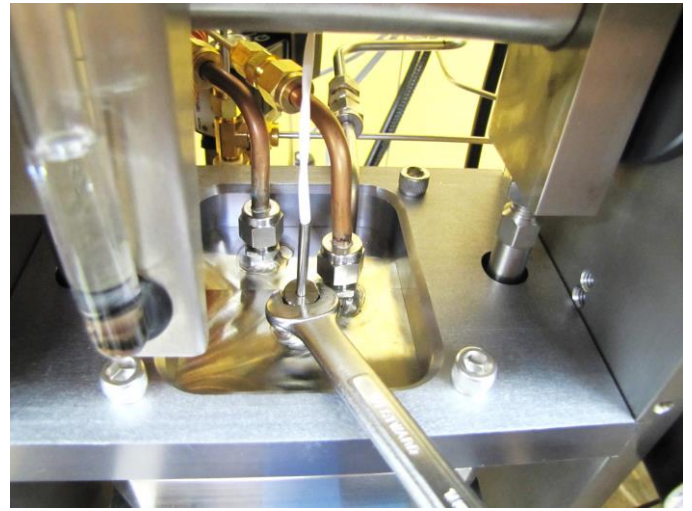
7. Reinstall the Temperature Probe.

After the test is complete, slide the Temperature Probe back into the fitting until it reaches the mark made in step #2. Make sure that the probe does not protrude below the spacer plate.



8. Tighten the fitting.

Tighten the temperature probe fitting until finger tight. Then using a $\frac{7}{16}$ " wrench, tighten the fitting a $\frac{1}{8}$ - $\frac{1}{4}$ " turn past finger tight.

**9. Reattach the front cover.**

Reattach the front cover using the four screws from step #1 and a $\frac{1}{8}$ " Allen Screw Driver.



If the temperatures on the Calibrated Thermometer and the Instrument Display were not within 1 degree, contact ANKOM Technology.