

This service procedure details the replacement of the XT Thermistor Assembly (SKU: #X96). Note: Front cover aesthetics may vary according to the age and model of the instrument.

1. Power down and unplug the XT10 or XT15 for safety.

2. **Remove the back cabinet.**

Remove the eight screws (four on each side of the instrument) that secure the back cabinet onto the instrument using a 1/8" Allen wrench. Set the screws aside for later use. (Figure 1)

Lift up, then pull back, so the handles on each side slide out of the notched groove. (Figure 2)

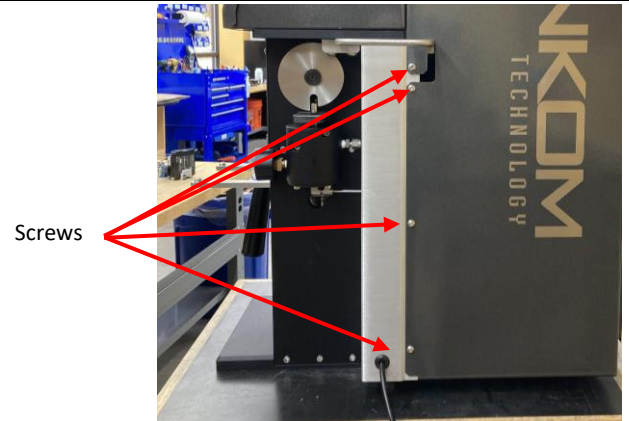


Figure 1

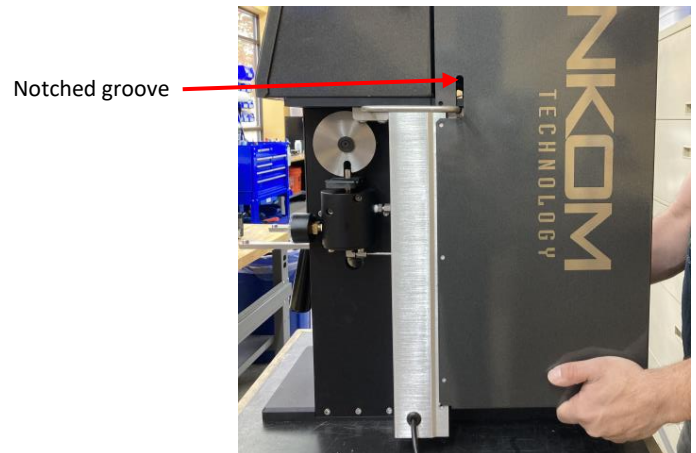


Figure 2

3. **Remove the front cover.**

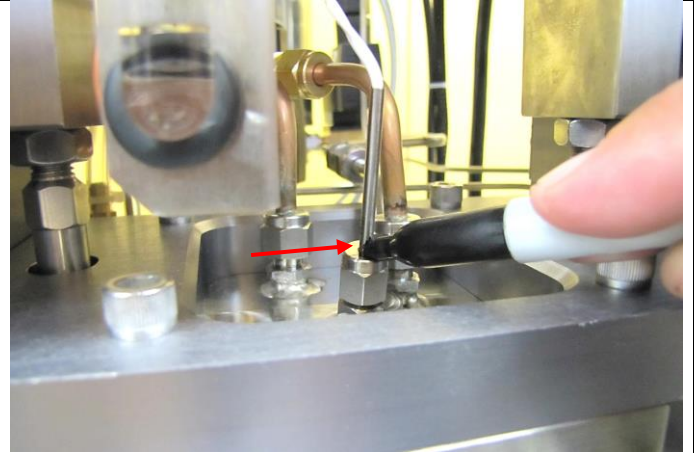
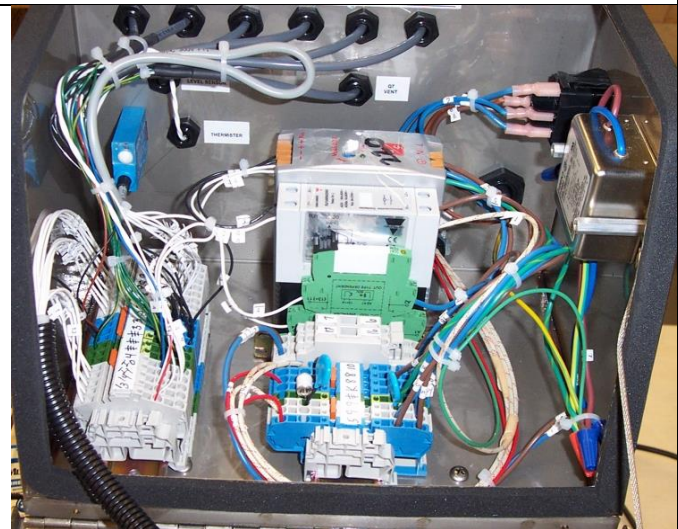
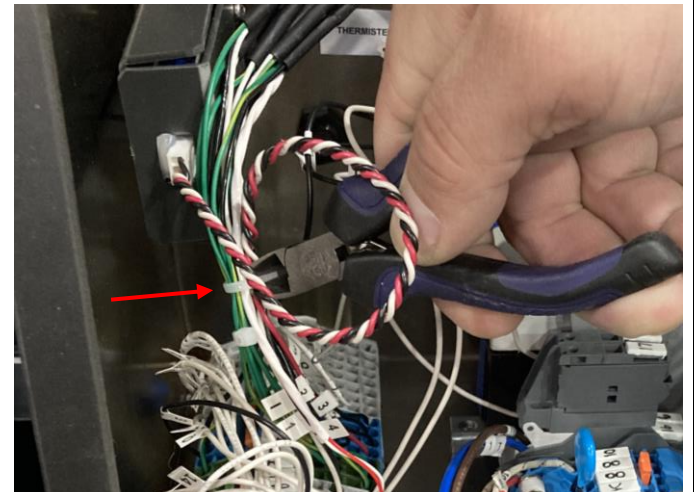
Remove the four screws on the front cover of the instrument using a 1/8" Allen wrench and set aside the front cover and screws aside to be reassembled later.

Caution: Before proceeding, make sure the previous run is complete, there is no solvent in the vessel, and the pressure gauge reads zero.

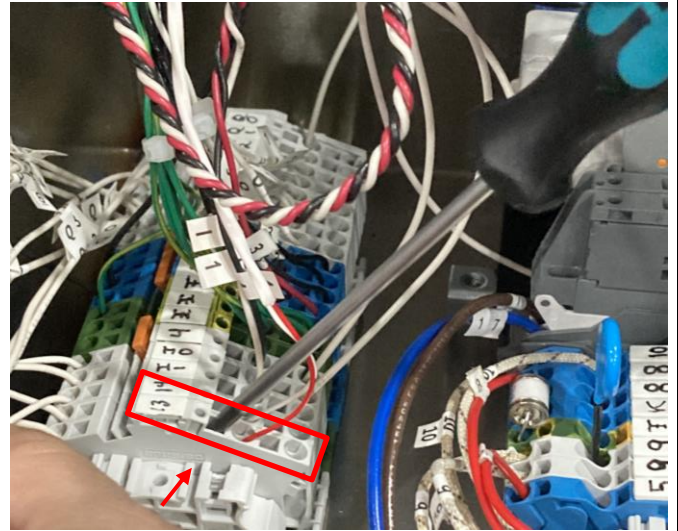


4. Mark the current Thermistor Assembly.

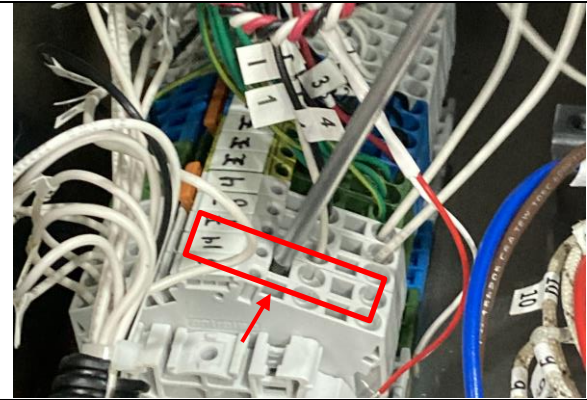
Make a mark at the base of the Thermistor Assembly using a black marker to recall how far the new temperature probe is to be inserted.

**5. Open the electrical cabinet.****6. Cut the zip tie holding the Thermistor Assembly.**

7. Remove the wire labeled 13 by pressing a screwdriver into the square above the label and gently pulling the wire from its spot.



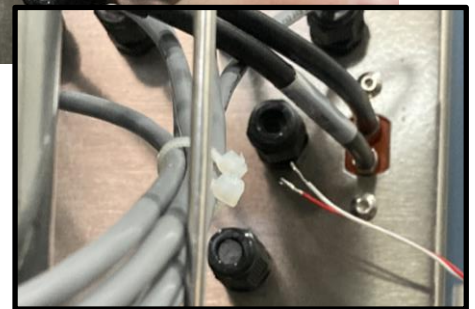
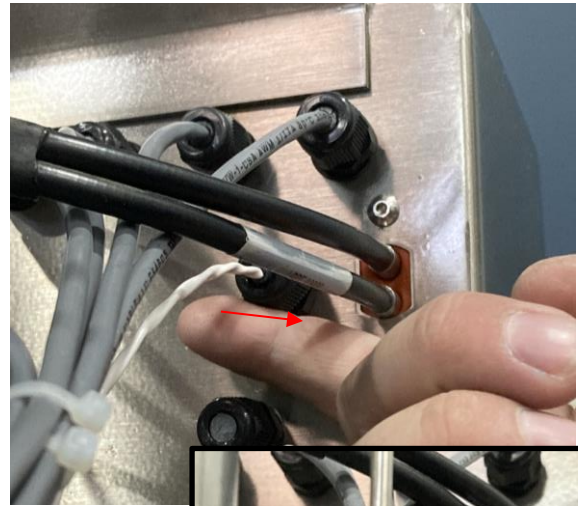
8. Remove the wire labeled 14 by pressing a screwdriver into the square above the label and gently pulling the wire out of its spot.



9. At the rear of the instrument, identify the zip tie holding in the Thermistor Assembly and cut the zip tie.

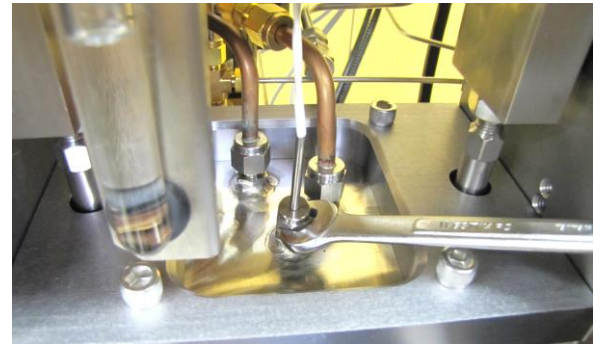


10. Loosen the bulkhead cap holding the Thermistor Assembly wiring. Once loose, remove the wire.



11. At the front of the instrument, loosen the Thermistor Assembly fitting with a 7/16" wrench and remove the old Thermistor Assembly.

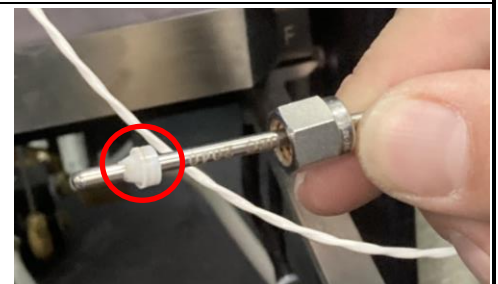
Note: Do not take the nut off the fitting.



12. Remove the Thermistor Assembly and obtain the new one.

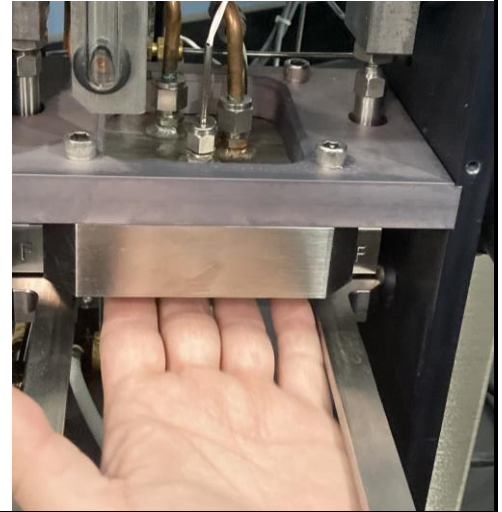


13. Remove the Teflon ferrule from the old Thermistor Assembly and install it on the new one as shown.



14. Install the Thermistor Assembly in the instrument. Keep your hand under the chamber top to make sure it does not protrude past the cooling coils of the chamber top.

Confirm it is installed to meet the guideline drawn in step 4. Retighten the nut to fix it in place.



15. Install the red and white wires of the assembly into the bulkhead cap at the back cabinet. Tighten the bulkhead cap to secure the wires.



16. Install the white wire labeled 13 in the slot pictured.

Using a screwdriver, press down in the second slot of the bottom and place the wire inside the bottom slot, removing the screwdriver once installed.



17. Install the red wire labeled 14 in the slot pictured using the same process as detailed in the step above.



18. Replace the front cover of the instrument and reinstall the four screws using a 1/8" Allen wrench.



19. **Reinstall the back cabinet.**

Slide the handles on each side into the notched groove. (Figure 1)

Reinstall the eight screws (four on each side of the instrument) that secure the back cabinet onto the instrument using a 1/8" Allen wrench. (Figure 2)

Notched groove

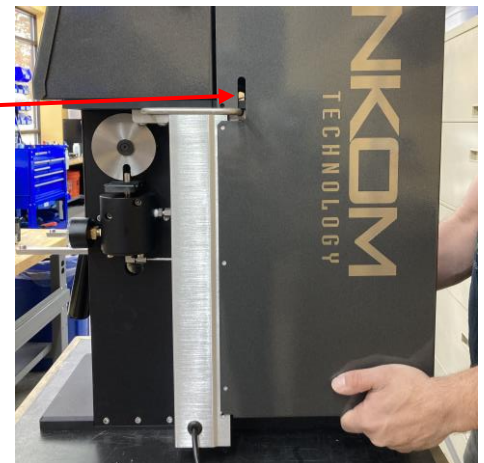


Figure 1

Screws

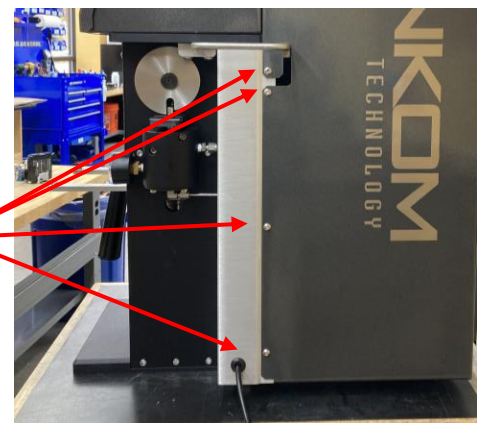


Figure 2