

This service procedure details the replacement of the LCD Screen Assembly (SKU: #X90). Note: Front cover aesthetics may vary according to the age and model of the instrument.

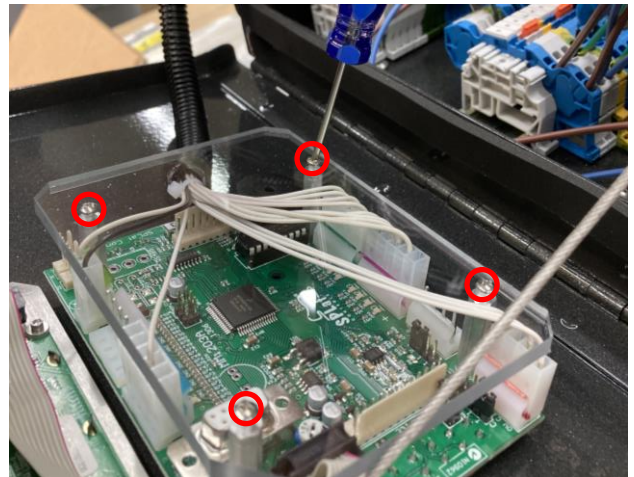
1. **Power down and unplug the XT10 or XT15 for safety.**

2. **Open the electrical cabinet.**

Unscrew the two screws holding the electrical cabinet cover using an 1/8" Allen wrench. Set aside the screws for reassembly later.



3. Remove the control panel plate cover by removing the screws with a small Phillips screwdriver. Set aside the plate cover and screws to be reassembled later.



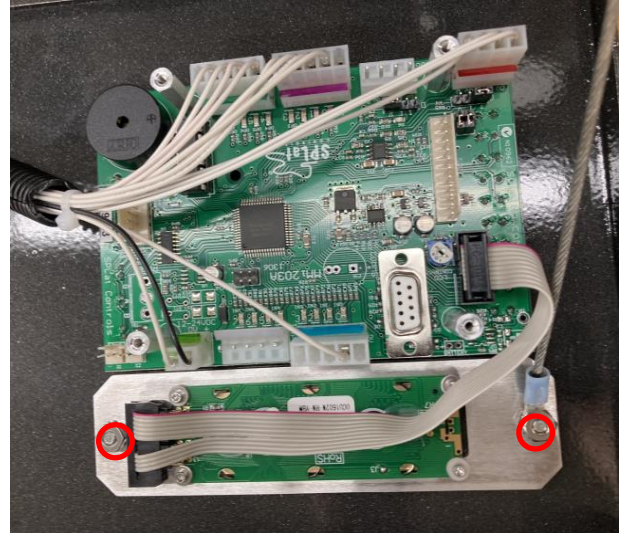
4. Unplug the LCD Screen Assembly (#X90) from the SPLIT controller.



- Remove the two nuts that are holding down the screen with a 3/8" socket wrench. Set aside for reassembly with the replacement part.

Pull old LCD Screen Assembly from the instrument to remove.

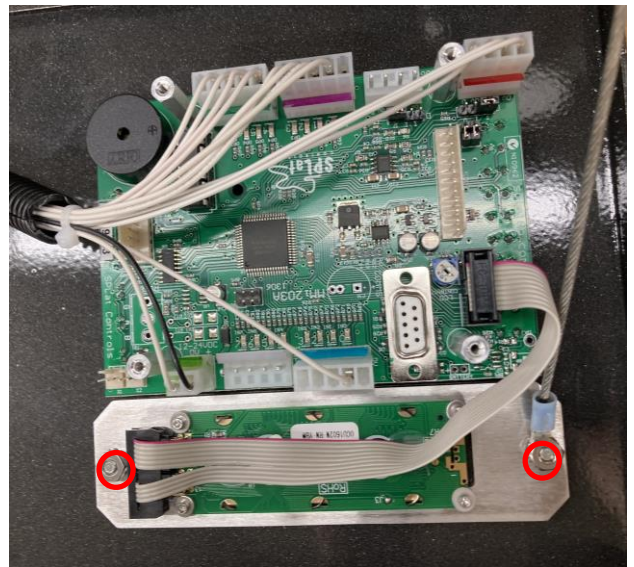
Note: When removing the nut on the right side, the support cable for the front cabinet will no longer hold the front cabinet in suspension. Hold the front cabinet while unhooking the cable and gently lower to keep it from swinging down.



- Install the new LCD Screen Assembly (#X90) by clipping the support cable back into place.



- Replace the two nuts (along with the support cable beneath the nut on the right side) required to hold the screen in place.

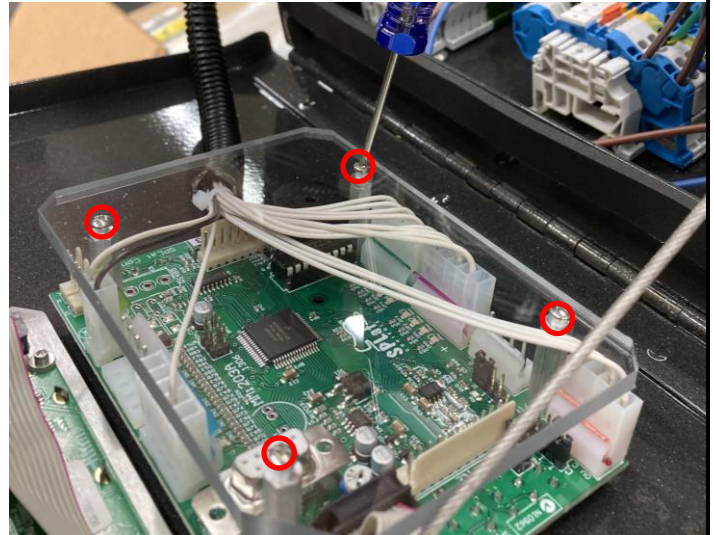


- Plug in the instrument and turn it on to confirm that the replacement has been successfully installed.

NOTE: If the screen does not light up, shut the instrument off again and check the connection.

DO NOT test the connection unless instrument is off.

9. Reinstall the control panel plate cover by replacing the screws with the small Phillips head screwdriver.



10. Close the electrical cabinet and replace the two 1/8" Allen wrench screws.

